

**FRED WEHRAN DRIVE  
(A.K.A RISER ROAD)**

**LEGEND**

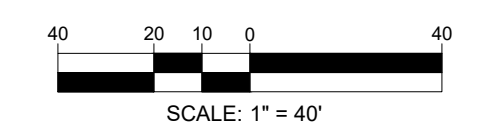
APPROX LOCATION OF PREVIOUSLY PERFORMED SOIL PROFILE PIT PER WHITESTONE ASSOCIATES, INC. TEST LOCATION PLAN DATED 04/29/2015

SPP #

**THIS PLAN TO BE UTILIZED FOR DRAINAGE AND UTILITIES PURPOSES ONLY.**

**REFER TO GENERAL NOTES FOR ADDITIONAL NOTES, REFERENCES AND SPECIFICATIONS.**

NOTE: ALL OR A PORTION OF THIS LOT LIES IN A FLOOD HAZARD AREA. CERTAIN ACTIVITIES IN FLOOD HAZARD AREAS AND RIPARIAN ZONES ARE REGULATED BY THE NEW JERSEY DEPARTMENT OF ENVIRONMENTAL PROTECTION AND SOME ACTIVITIES MAY BE PROHIBITED ON THIS SITE OR MAY FIRST REQUIRE A FLOOD HAZARD AREA PERMIT. CONTACT THE DIVISION OF LAND USE REGULATION AT (609) 777-0454 FOR MORE INFORMATION PRIOR TO ANY CONSTRUCTION ONSITE.



**BOHLER**  
SITE CIVIL AND CONSULTING ENGINEERING  
PROGRAM MANAGEMENT  
LANDSCAPE ARCHITECTURE  
SUSTAINABLE DESIGN  
PERMITTING SERVICES  
TRANSPORTATION SERVICES

**REVISIONS**

REV	DATE	COMMENT	DRAWN BY

**811**  
Know what's below.  
Call before you dig.  
NEW JERSEY  
YOU MUST CALL 811 BEFORE ANY EXCAVATION WHETHER IT'S ON PRIVATE OR PUBLIC LAND.  
1-800-272-1000  
www.nj-811.org

**ISSUED FOR MUNICIPAL & AGENCY REVIEW & APPROVAL**

THIS DRAWING IS INTENDED FOR MUNICIPAL AND/OR AGENCY REVIEW AND APPROVAL. IT IS NOT INTENDED AS A CONSTRUCTION DOCUMENT UNLESS INDICATED OTHERWISE.

PROJECT No.: NJC240059-00-0E  
DRAWN BY: CTC  
CHECKED BY: BE  
DATE: 10/28/2025  
CAD ID: P-CIVIL-GDUL

**SITE DEVELOPMENT PLANS**  
FOR  
**SIGNATURE AVIATION USA, LLC**  
SIGNATURE AVIATION  
PROPOSED EAST SIDE RAMP EXPANSION & HANGAR  
TETERBORO AIRPORT  
FRED WEHRAN DRIVE  
BOROUGH OF TETERBORO  
BERGEN COUNTY, NEW JERSEY

**BOHLER**  
BOHLER ENGINEERING NJ, LLC  
125 HALF MILE ROAD, SUITE 207  
RED BANK, NJ 07701  
Phone: (732) 825-6800  
www.BohlerEngineering.com  
NJ CERT. OF AUTHORIZATION NO. 246A28161700 & MH000122

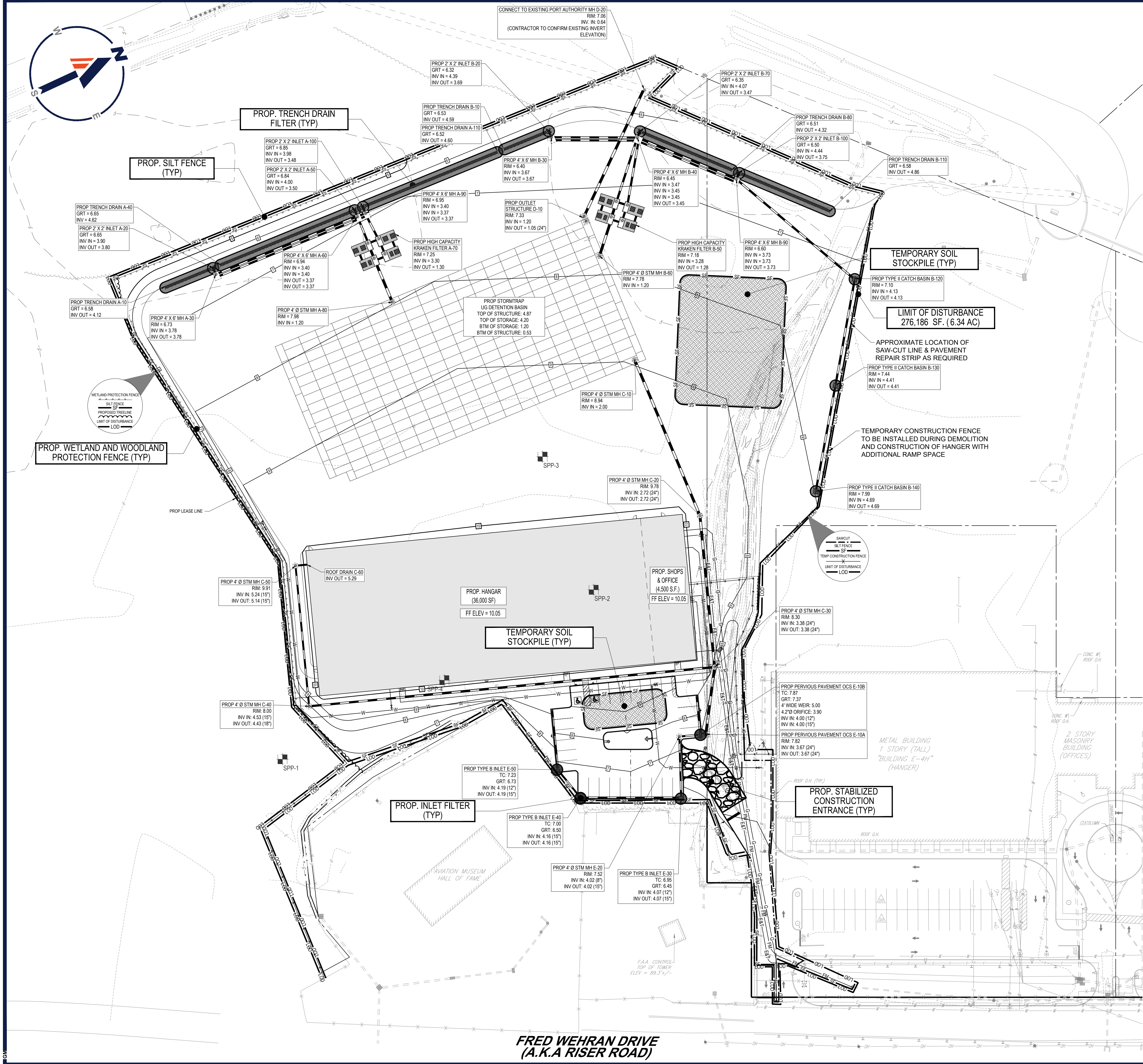
**J.A. HOLZAPFEL**  
REGISTERED PROFESSIONAL ENGINEER  
NEW JERSEY LICENSE NO. 3500

SHEET TITLE:  
**DRAINAGE AND UTILITIES PLAN**

SHEET NUMBER:  
**6**  
OF 17

ORG. DATE - 10/28/2025

I:\BOHLER\NET\SHARES\N\PROJECTS\2025\NJC240059-00\CADD\DRAWINGS\PLAN SET\CIVIL SITE PLAN\SPP-CIVIL-GDUL-NJC240059-00-0E-1-LAYOUT-C-601-DTL



FRED WEHRAN DRIVE  
(A.K.A. RISER ROAD)

**LEGEND**

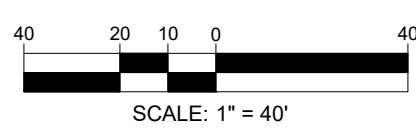
PROPOSED

INLET FILTER	
SILT FENCE	
LIMIT OF DISTURBANCE	
TEMPORARY CONSTRUCTION FENCE	
WETLAND PROTECTION FENCE	
CONSTRUCTION ENTRANCE	
TEMPORARY STOCKPILE	

**LIMIT OF DISTURBANCE LINE HAS BEEN OFFSET FOR GRAPHICAL PURPOSES. ACTUAL LIMIT OF DISTURBANCE WILL OCCUR AT THE SILT FENCE OR LIMIT OF GRADING.**

**THIS PLAN TO BE UTILIZED FOR SOIL EROSION AND SEDIMENT CONTROL PURPOSES ONLY.**

**REFER TO GENERAL NOTES FOR ADDITIONAL NOTES, REFERENCES AND SPECIFICATIONS.**



**REVISIONS**

REV	DATE	COMMENT	DRAWN BY	CHECKED BY

**811**  
Know what's below.  
Call before you dig.  
NEW JERSEY  
YOU MUST CALL 811 BEFORE ANY EXCAVATION  
WHETHER IT'S ON PRIVATE OR PUBLIC LAND.  
1-800-272-1000  
www.nj-811.org

**ISSUED FOR MUNICIPAL & AGENCY REVIEW & APPROVAL**

THIS DRAWING IS INTENDED FOR MUNICIPAL AND/OR AGENCY REVIEW AND APPROVAL. IT IS NOT INTENDED AS A CONSTRUCTION DOCUMENT UNLESS INDICATED OTHERWISE.

PROJECT No.: NJC240059-00-0E  
DRAWN BY: CTC  
CHECKED BY: BE  
DATE: 10/28/2025  
CAD ID: P-CIVIL-PROP

**SITE DEVELOPMENT PLANS**  
FOR  
**SIGNATURE AVIATION USA, LLC**

**SIGNATURE AVIATION**  
PROPOSED EAST SIDE RAMP EXPANSION & HANGAR  
TETERBORO AIRPORT  
FRED WEHRAN DRIVE  
BOROUGH OF TETERBORO  
BERGEN COUNTY, NEW JERSEY

**BOHLER**  
BOHLER ENGINEERING NJ, LLC  
125 HALF MILE ROAD, SUITE 207  
RED BANK, NJ 07701  
Phone: (732) 825-6800  
www.BohlerEngineering.com

**J.A. HOLZAPFEL**  
PROFESSIONAL ENGINEER  
NEW JERSEY LICENSE # 35500

SHEET TITLE:  
**SOIL EROSION AND SEDIMENT CONTROL PLAN**

SHEET NUMBER:  
**7**  
OF 17  
ORG. DATE - 10/28/2025

I:\BOHLER\NET\SHARE\B\PROJECTS\2025\NJ\CAD\DRAWINGS\PLAN SET\CIVIL-PROP-AC240059-00-0E-1-LAYOUT-C-801-EROS







### LIGHT POLE FOUNDATION SCHEDULE

MAXIMUM HEIGHT ABOVE GRADE (INCL. BASE) "A"	20'-0"
ASSUMED AVERAGE POLE DIAMETER "B"	4"
# OF FIXTURES	SINGLE
MINIMUM FOUNDATION DIAMETER "C"	24"
MINIMUM FOUNDATION DEPTH "D"	6'-0"
REINFORCING TIES "E"	#3 TIES @ 12" C-C (6) #5 BARS EQUALLY SPACED
VERTICAL HOOKED REINFORCEMENT "F"	VERTICAL HOOKED REINFORCEMENT "F"

\*\* = ADD 3 TIES, 4" C-C, AT TOP OF THE FOUNDATION  
\*\*\* = THIS MAY NOT BE ACTUAL MOUNTING HEIGHT, SEE LIGHTING SCHEDULE

### LIGHT POLE FOUNDATION NOTES

- THE CONTRACTOR MUST VERIFY ALL DIMENSIONS AND CONDITIONS. COORDINATE WITH ALL CONTRACT DRAWINGS, PROJECT SHOP DRAWINGS AND FIELD CONDITIONS PRIOR TO CONSTRUCTION. CONTRACTOR MUST ENSURE NO CONFLICTS ARISE BETWEEN LIGHT POLE FOUNDATIONS, STRUCTURES, AND UTILITIES. IF ANY DISCREPANCIES BETWEEN FIELD CONDITIONS AND DESIGN PLANS ARISE, THE ENGINEER MUST BE NOTIFIED IMMEDIATELY IN WRITING.
- THE CONTRACTOR IS TO HAVE A GEOTECHNICAL ENGINEER, LICENSED IN THE PROJECT'S STATE, ON SITE TO INSPECT FILL, MONITOR FILL COMPACTION AND TO VERIFY SUBGRADE ALLOWABLE BEARING CAPACITY AND SOIL DESIGN CRITERIA PRIOR TO CONSTRUCTION IN ACCORDANCE TO THE DESIGN ASSUMPTIONS STATED. UNSUITABLE MATERIALS FOUND MUST BE REMOVED OR BE REMEDIATED AS PER THE DIRECTION OF THE ON SITE GEOTECHNICAL ENGINEER.
- IF CONDITIONS IN THE FIELD ARE DIFFERENT THAN THOSE INDICATED, THE CONTRACTOR IS TO IMMEDIATELY NOTIFY THE ENGINEER IN WRITING.
- CONTRACTOR IS RESPONSIBLE TO ENSURE THAT APPROPRIATE SELECT BACKFILL IS USED, AND THOROUGHLY COMPACTED TO 98% MAX. DENSITY ASTM D 698.
- STRUCTURAL CONCRETE AND CONCRETE PRACTICES SHALL CONFORM WITH ACI-318, "BUILDING CODE REQUIREMENTS FOR STRUCTURAL CONCRETE"; DETAILS ARE TO BE IN ACCORDANCE WITH ACI-315, "MANUAL OF STANDARD PRACTICE, DETAILS AND DETAILING OF CONCRETE REINFORCEMENT"; FORM WORK SHALL CONFORM ACI-347 "GUIDE TO FORM WORK FOR CONCRETE"; UNLESS OTHERWISE NOTED ON THE CONTRACT DOCUMENTS.
- CONCRETE MUST BE NORMAL WEIGHT STONE AGGREGATE WITH THE STATED MINIMUM COMPRESSIVE STRENGTH OF 4000 PSI AT 28 DAYS, HISTORICAL DATA OR LABORATORY TESTS FOR THE PRELIMINARY DESIGN MIX IS TO BE SUBMITTED TO THE ENGINEER FOR REVIEW PRIOR TO CONSTRUCTION. THE WATER-CEMENT RATIO FOR THE PROPOSED MIX DESIGN MUST ACHIEVE AN AVERAGE 28-DAY STRENGTH OF 1,200 PSI GREATER THAN THE REQUIRED STRENGTH ON LABORATORY TEST RESULTS.
- CONCRETE IS TO HAVE A SLUMP NO GREATER THAN 4" TO WITHIN A TOLERANCE OF 1".
- EXPOSED CONCRETE IS TO BE AIR ENTRAINED, 6% (WITHIN 1% TOLERANCE), CONFORMING TO ASTM C260.
- CONCRETE IS TO BE CONSOLIDATED IN PLACE USING AN INTERNAL VIBRATOR.
- REINFORCING STEEL BARS SHALL BILLET STEEL, ASTM A615, GRADE 60. ALL REINFORCEMENT TO BE SECURELY HELD IN PLACE WHILE PLACING CONCRETE. IF REQUIRED, ADDITIONAL BARS OR STIRRUPS TO BE PROVIDED BY THE CONTRACTOR TO FURNISH SUPPORT FOR ALL BARS. BAR SUPPORTS IN CONTACT WITH EXPOSED SURFACES TO BE PLASTIC TYPED. ALL ACCESSORIES MUST BE GALVANIZED.
- ALL SPLICES OF REINFORCING BARS NOT INDICATED ARE TO BE LAPS AS PER THE REINFORCING SPLICE SCHEDULE ON 40 BAR DIAMETERS. DISCONTINUOUS ENDS OF CONTINUOUS BARS ARE TO BE STANDARD JOCKS.
- IF CHAINS OR DRILLED HOLES ARE ENCOUNTERED, CONTRACTOR SHALL PROVIDE BENTONITE SLURRY IN PERMANENT CASINGS FOR DRILLED CONCRETE PIER FOUNDATIONS.
- CONCRETE MUST ATTAIN 80% OF THE DESIGN STRENGTH OR CURE FOR A MINIMUM OF 7-DAYS PRIOR TO THE INSTALLATION OF THE LIGHT POLES OR ALL LIGHT POLES ARE TO BE SUITABLY BRACED AGAINST WIND LOADS DURING THE ABOVE MENTIONED TIMEFRAME.
- ALL ELECTRICAL COMPONENTS TO COMPLY WITH N.E.C.
- WHEN 2'-6" CLEARANCE CAN NOT BE PROVIDED, CONCRETE FOUNDATION MUST BE EXTENDED TO 36" ABOVE SURFACE, OR PROVIDE BOLLARD PROTECTION FOR LIGHT POLE.
- VERIFY WITH LOCATIONS SHOWN ON LIGHTING PLAN.
- CONTRACTOR IS TO RECORD ON A CLEAN COPY OF THE LIGHTING PLANS, THE LOCATION OF CONDUIT SUPPLYING POWER TO LIGHTS. A COMPLETED COPY OF THIS RECORD PLAN IS TO BE PROVIDED TO THE OWNER PRIOR TO FINAL ACCEPTANCE OF THE WORK.
- UPON ACCEPTANCE OF THE COMPLETED WORK BY THE OWNER, THE OWNER IS RESPONSIBLE FOR APPROPRIATE MAINTENANCE OF THE LIGHTING SYSTEM.

### LIGHT POLE FOUNDATION DESIGN CRITERIA

- MINIMUM REQUIRED ALLOWABLE BEARING PRESSURE = 1,000 PSF - ASSUMED (TO BE VERIFIED IN FIELD)
- SOIL FRICTION ANGLE = 30 DEGS - ASSUMED (TO BE VERIFIED IN FIELD)
- SOL DRY UNIT WEIGHT = 120 PCF - ASSUMED (TO BE VERIFIED IN FIELD)
- WIND PRESSURE = 30 PSF

## LITHONIA LIGHTING

### FEATURES & SPECIFICATIONS

**INTENDED USE** - These specifications are for SSS standard only. Square straight steel is a general purpose light pole for up to 19 foot mounting heights. This pole provides a robust yet cost effective option for mounting any lights and fixtures.

**CONSTRUCTION**

**Pole Shaft:** Pole shaft shall be of uniform dimension and wall thickness and is made of a suitable grade, hot rolled, commercial-quality steel tubing with a minimum yield of 55 KSI (1.39 gpa, 1.02, or 92 KSI (1.7 gpa, 1.17)). Shaft one piece with full length longitudinal high frequency electric resistance weld, uniformly square cross-section with flat ends, small corner radii and excellent torsional qualities. Available shaft weights are 1.5" and 2".

**Pole Top:** Options include 4" extra top, drilled for side mount fixture, smooth with drilling (includes extra hardware) and open top. Side drilled and open top poles include a removable top cap.

**Hardware:** A reinforced hardware with grounding provision is provided at 18" from the base on side A. Positioning the hardware may not be possible and requires engineering review, consult Tech Support/Outdoor for further information. Every hardware includes a cover and anchor attachment hardware. The hardware has a nominal dimension of 2.5" x 5".

**Base Cover:** For 40-bar SSS poles, one piece full base cover, finished to match the pole, is provided with each pole assembly. Additional base cover options are available upon request.

**Anchor Base Bolts:** Anchor base is fabricated from steel that meets ASTM A36 standards and can be altered to match existing foundations, consult factory for modifications. Anchor bolts are manufactured to ASTM F1554 Standards grade 55, SS 19 minimum yield strength and tensile strength of 75,000 KSI. Top threaded portion (nominal 1.2") is hot-dipped galvanized per ASTM A-153.

**Hardware:** All structural fasteners are high strength galvanized carbon steel. All non-structural fasteners are galvanized or zinc-plated carbon steel or stainless steel.

**Finish:** - Extra durable painted finish is coated with TIG (Triglycidyl isocyanurate) Polyester powder that meets SA and SB classifications of ASTM D3359. Powder-coat finishes include Dark Bronze, White, Black, and Natural Aluminum colors. Additional colors and special finishes are available by quote and include, but are not limited to: Paint over Hot-dipped Galvanized, RAL Colors, Custom Colors and Extended Warranty Finishes.

**GOVERNMENT PROCUREMENT**

S&B - Buy American Act: Product qualifies as a domestic end product under the Buy American Act as implemented in the FAR and DFARS. Product also qualifies as manufactured in the United States under DOT Buy American regulations.

S&M - Buy American Act: Product qualifies as a domestic end product under the Buy American Act as implemented in the FAR and DFARS. Product also qualifies as manufactured in the United States under the definitions of the Buy American Act.

Please refer to [www.lithonia.com/usa-specs](http://www.lithonia.com/usa-specs) for additional information.

**INSTALLATION** - Do not erect poles without having fixtures installed. Factory-applied protective wrapping must be used when setting anchor bolts. Lithonia Lighting will not accept claims for removal or damage placement due to failure to use Lithonia Lighting factory templates. If poles are stored outside, all protective wrapping must be removed immediately upon delivery to prevent finish damage. Lithonia Lighting is not responsible for the foundation design.

**WARRANTY** - 1-year limited warranty. This is the only warranty provided and no other statements in this specification sheet create any warranty of any kind. All other express and implied warranties are disclaimed. Complete warranty terms located at: [www.lithonia.com/warranty](http://www.lithonia.com/warranty) Terms and conditions.

**NOTE:** Actual performance may differ as a result of end-user environment and application. Specifications subject to change without notice.

**Anchor Base Poles**

## SSS

### SQUARE STRAIGHT STEEL

**BAA BABA**

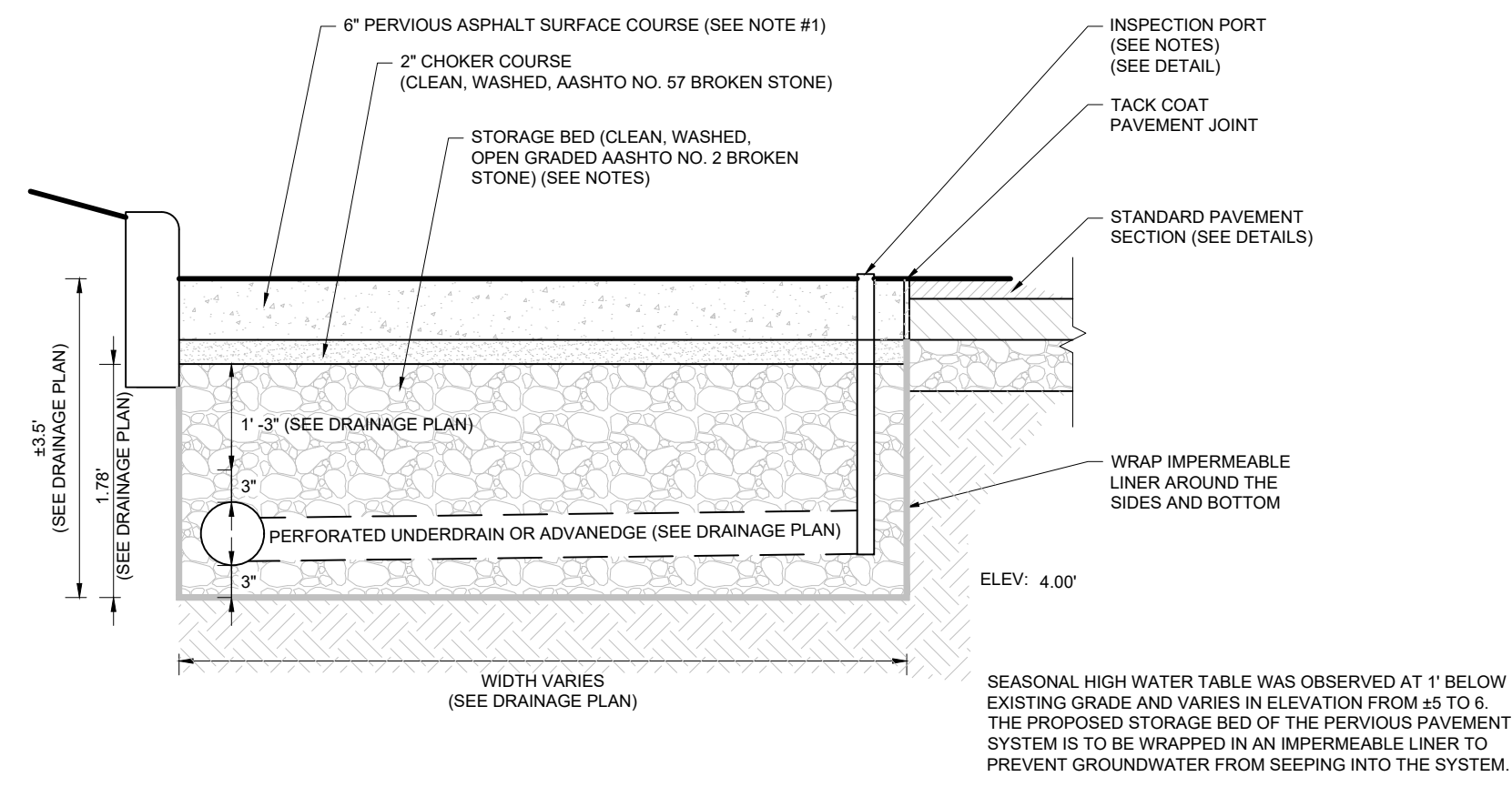
Series	Nominal Fixture mounting height	Nominal Shaft Base (Shaft Wall Thickness)	Mounting*	Options	Finish
SSS	10'-0" (for 12" increments, add 4" to the pole height. Ex: 20'-0" equals 20'6")	4C 4" x 4" (0.120")	Top mounting	Shipped installation	Super durable paint color
		4C 4" x 4" (0.120")	P1 Open top (includes 10' cap)	Welded vibration damper*	Dark bronze
		5C 5" x 5" (0.120")	T20 2.5" x 0.120" (2" NPS)	Hydraulic arm bracket (1 fixture*)	DR100 Black
		5C 5" x 5" (0.120")	T25 2.5" x 0.120" (2" NPS)	Hydraulic arm bracket (1 fixture*)	DR140 Natural aluminum
		6C 6" x 6" (0.120")	T30 3.0" x 0.120" (2" NPS)	Hydraulic arm bracket (1 fixture*)	DR160 White
		6C 6" x 6" (0.120")	T35 3.0" x 0.120" (2" NPS)	Hydraulic arm bracket (1 fixture*)	DR180 Sandstone
			DR100X (DR100) DR100X (DR100) DR100X (DR100)	Hydraulic arm bracket (1 fixture*)	DR200 Charcoal grey
			DR140X (DR140) DR140X (DR140) DR140X (DR140)	Hydraulic arm bracket (1 fixture*)	DR220 Ivory grey
			DR160X (DR160) DR160X (DR160) DR160X (DR160)	Hydraulic arm bracket (1 fixture*)	DR240 Bright red
			DR180X (DR180) DR180X (DR180) DR180X (DR180)	Hydraulic arm bracket (1 fixture*)	DR260 Steel blue
			DR200X (DR200) DR200X (DR200) DR200X (DR200)	Hydraulic arm bracket (1 fixture*)	DR280 Textured dark bronze
			DR220X (DR220) DR220X (DR220) DR220X (DR220)	Hydraulic arm bracket (1 fixture*)	DR300 Textured black
			DR240X (DR240) DR240X (DR240) DR240X (DR240)	Hydraulic arm bracket (1 fixture*)	DR320 Textured natural aluminum
			DR260X (DR260) DR260X (DR260) DR260X (DR260)	Hydraulic arm bracket (1 fixture*)	DR340 Textured white
			DR280X (DR280) DR280X (DR280) DR280X (DR280)	Hydraulic arm bracket (1 fixture*)	DR360 Galvanized finish
			DR300X (DR300) DR300X (DR300) DR300X (DR300)	Hydraulic arm bracket (1 fixture*)	DR380 Architectural colors and special finishes*
			DR320X (DR320) DR320X (DR320) DR320X (DR320)	Hydraulic arm bracket (1 fixture*)	DR400 Prime over galvanizing
			DR340X (DR340) DR340X (DR340) DR340X (DR340)	Hydraulic arm bracket (1 fixture*)	DR420 3 year warranty extension
			DR360X (DR360) DR360X (DR360) DR360X (DR360)	Hydraulic arm bracket (1 fixture*)	DR440 Use designated Lithonia Lightingomenclature in bill of materials
			DR380X (DR380) DR380X (DR380) DR380X (DR380)	Hydraulic arm bracket (1 fixture*)	DR460 New color palette assigned through Customer Care "Custom Color Process"
			DR400X (DR400) DR400X (DR400) DR400X (DR400)	Hydraulic arm bracket (1 fixture*)	DR480 Custom color
			DR420X (DR420) DR420X (DR420) DR420X (DR420)	Hydraulic arm bracket (1 fixture*)	DR500 Custom color
			DR440X (DR440) DR440X (DR440) DR440X (DR440)	Hydraulic arm bracket (1 fixture*)	DR520 Custom color
			DR460X (DR460) DR460X (DR460) DR460X (DR460)	Hydraulic arm bracket (1 fixture*)	DR540 Custom color
			DR480X (DR480) DR480X (DR480) DR480X (DR480)	Hydraulic arm bracket (1 fixture*)	DR560 Custom color
			DR500X (DR500) DR500X (DR500) DR500X (DR500)	Hydraulic arm bracket (1 fixture*)	DR580 Custom color
			DR520X (DR520) DR520X (DR520) DR520X (DR520)	Hydraulic arm bracket (1 fixture*)	DR600 Custom color
			DR540X (DR540) DR540X (DR540) DR540X (DR540)	Hydraulic arm bracket (1 fixture*)	DR620 Custom color
			DR560X (DR560) DR560X (DR560) DR560X (DR560)	Hydraulic arm bracket (1 fixture*)	DR640 Custom color
			DR580X (DR580) DR580X (DR580) DR580X (DR580)	Hydraulic arm bracket (1 fixture*)	DR660 Custom color
			DR600X (DR600) DR600X (DR600) DR600X (DR600)	Hydraulic arm bracket (1 fixture*)	DR680 Custom color
			DR620X (DR620) DR620X (DR620) DR620X (DR620)	Hydraulic arm bracket (1 fixture*)	DR700 Custom color
			DR640X (DR640) DR640X (DR640) DR640X (DR640)	Hydraulic arm bracket (1 fixture*)	DR720 Custom color
			DR660X (DR660) DR660X (DR660) DR660X (DR660)	Hydraulic arm bracket (1 fixture*)	DR740 Custom color
			DR680X (DR680) DR680X (DR680) DR680X (DR680)	Hydraulic arm bracket (1 fixture*)	DR760 Custom color
			DR700X (DR700) DR700X (DR700) DR700X (DR700)	Hydraulic arm bracket (1 fixture*)	DR780 Custom color
			DR720X (DR720) DR720X (DR720) DR720X (DR720)	Hydraulic arm bracket (1 fixture*)	DR800 Custom color
			DR740X (DR740) DR740X (DR740) DR740X (DR740)	Hydraulic arm bracket (1 fixture*)	DR820 Custom color
			DR760X (DR760) DR760X (DR760) DR760X (DR760)	Hydraulic arm bracket (1 fixture*)	DR840 Custom color
			DR780X (DR780) DR780X (DR780) DR780X (DR780)	Hydraulic arm bracket (1 fixture*)	DR860 Custom color
			DR800X (DR800) DR800X (DR800) DR800X (DR800)	Hydraulic arm bracket (1 fixture*)	DR880 Custom color
			DR820X (DR820) DR820X (DR820) DR820X (DR820)	Hydraulic arm bracket (1 fixture*)	DR900 Custom color
			DR840X (DR840) DR840X (DR840) DR840X (DR840)	Hydraulic arm bracket (1 fixture*)	DR920 Custom color
			DR860X (DR860) DR860X (DR860) DR860X (DR860)	Hydraulic arm bracket (1 fixture*)	DR940 Custom color
			DR880X (DR880) DR880X (DR880) DR880X (DR880)	Hydraulic arm bracket (1 fixture*)	DR960 Custom color
			DR900X (DR900) DR900X (DR900) DR900X (DR900)	Hydraulic arm bracket (1 fixture*)	DR980 Custom color
			DR920X (DR920) DR920X (DR920) DR920X (DR920)	Hydraulic arm bracket (1 fixture*)	DR1000 Custom color

**Accessories:** Order as separate catalog number.

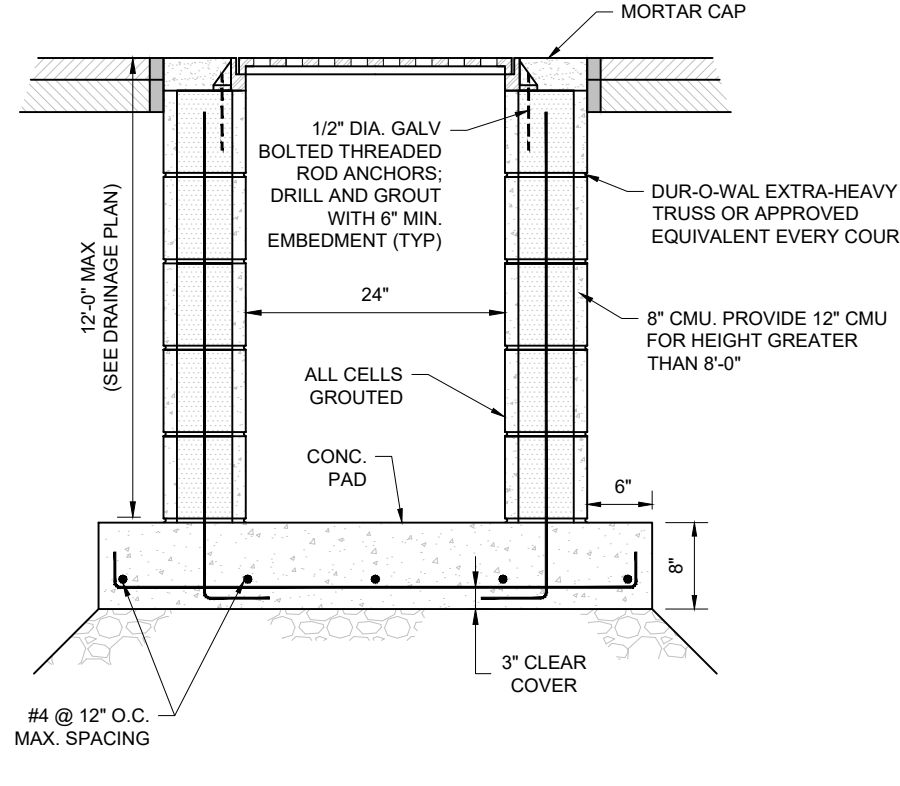
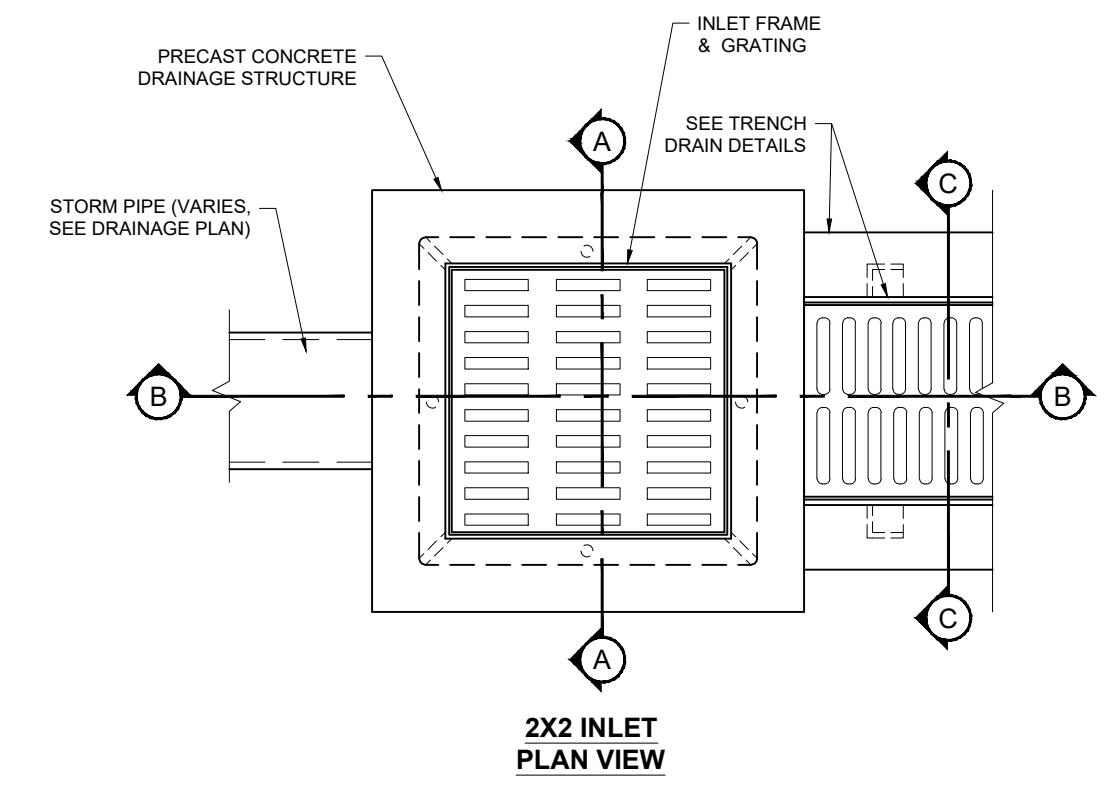
PL D70 Plug for E&A drillings  
PL D78 Plug for DR140X drillings  
FWD1T1 Field installed vibration damper (snake style)

**NOTES:**

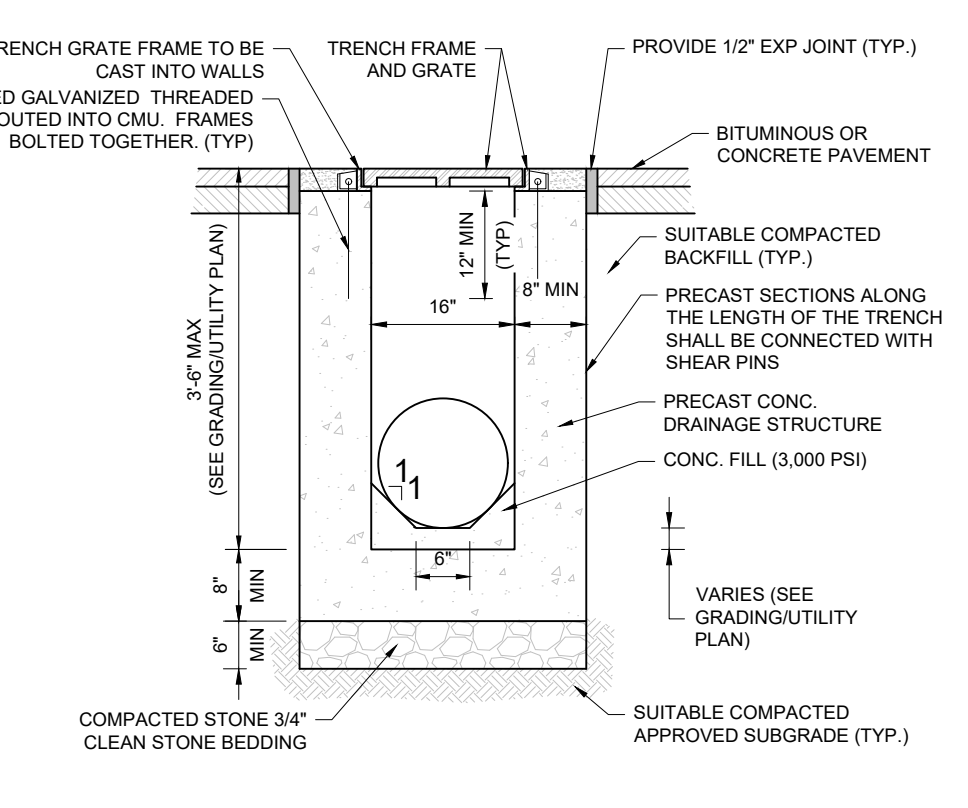
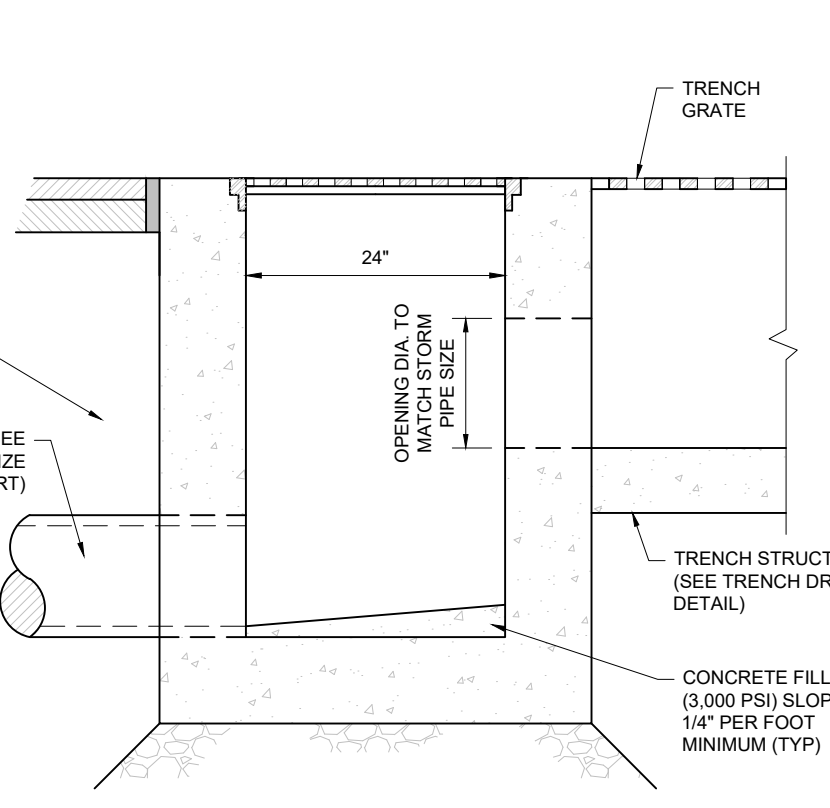
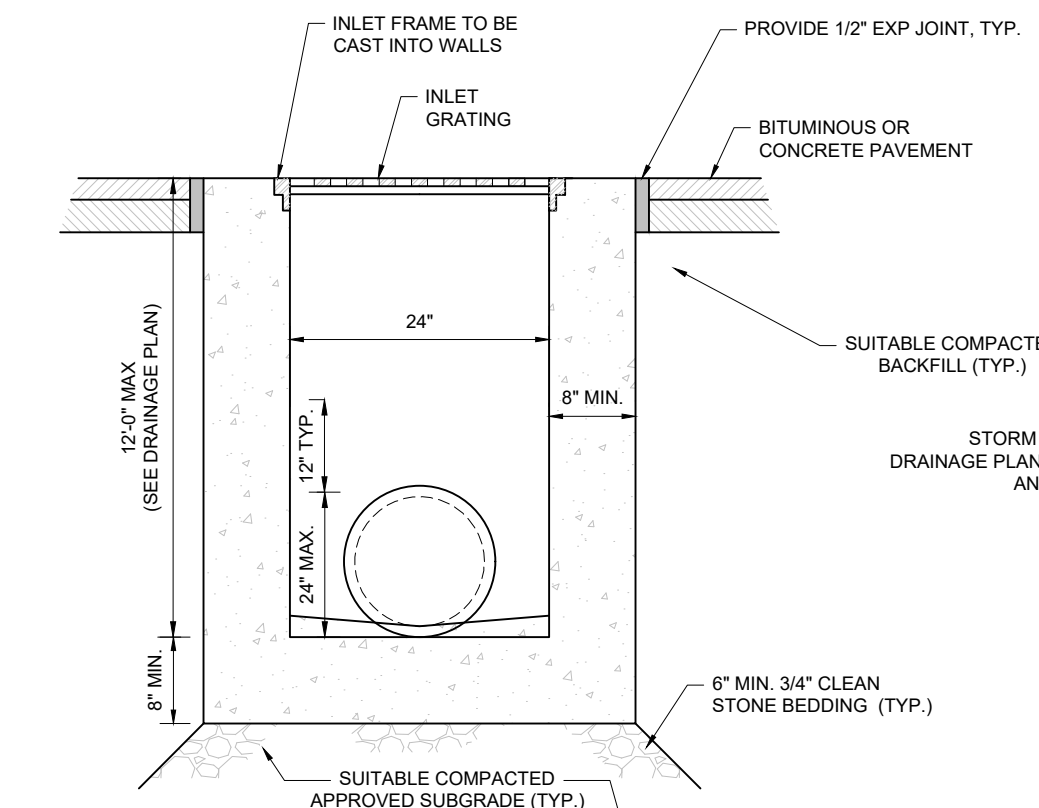
- \* 19' max height will be supplied with a "C" 1" Gauged or "D" 1" Gauged in homogeneous, "C" - 0.120" / "D" - 0.120".
- PT open top poles include top cap. When ordering custom mounting and drill mounting for bare poles, specify as desired in options section of the contract. The contract includes a limited warranty.
- Customize DR100X.
- DR100X and DR140X poles are for the current existing template system and installation compatibility.
- DR140X and DR160X poles cannot be installed on DR140X, DR160X, DR180X, DR200X, DR220X, DR240X, DR260X, DR280X, DR300X, DR320X, DR340X, DR360X, DR380X, DR400X, DR420X, DR440X, DR460X, DR480X, DR500X, DR520X, DR540X, DR560X, DR580X, DR600X, DR620X, DR640X, DR660X, DR680X, DR700X, DR720X, DR740X, DR760X, DR780X, DR800X, DR820X, DR840X, DR860X, DR880X, DR900X, DR920X, DR940X, DR960X, DR980X, DR1000X.
- DR100X and DR140X poles are for the current existing template system and installation compatibility.
- DR140X and DR160X poles cannot be installed on DR140X, DR160X, DR180X, DR200X, DR220X, DR240X, DR260X, DR280X, DR300X, DR320X, DR340X, DR360X, DR380X, DR400X, DR420X, DR440X, DR460X, DR480X, DR500X, DR520X, DR540X, DR560X, DR580X, DR600X, DR620X, DR640X, DR660X, DR680X, DR700X, DR720X, DR740X, DR760X, DR780X, DR800X, DR820X, DR840X, DR860X, DR880X, DR900X, DR920X, DR940X, DR960X, DR980X, DR1000X.
- DR100X and DR140X poles are for the current existing template system and installation compatibility.
- DR140X and DR160X poles cannot be installed on DR140X, DR160X, DR180X, DR200X, DR220X, DR240X, DR260X, DR280X, DR300X, DR320X, DR340X, DR360X, DR380X, DR400X, DR420X, DR440X, DR460X, DR480X, DR500X, DR520X, DR540X, DR560X, DR580X, DR600X, DR620X, DR640X, DR660X, DR680X, DR700X, DR720X, DR740X, DR760X, DR780X, DR800X, DR820X, DR840X, DR860X, DR880X, DR900X, DR920X, DR940X, DR960X, DR980X, DR1000X.
- DR100X and DR140X poles are for the current existing template system and installation compatibility.
- DR140X and DR160X poles cannot be installed on DR140X, DR160X, DR180X, DR200X, DR220X, DR240X, DR260X, DR280X, DR300X, DR320X, DR340X, DR360X, DR380X, DR400X, DR420X, DR440X, DR460X, DR480X, DR500X, DR520X, DR540X, DR560X, DR580X, DR600X, DR620X, DR640X, DR660X, DR680X, DR700X, DR720X, DR740X, DR760X, DR780X, DR800X, DR820X, DR840X, DR860X, DR880X, DR900X, DR920X, DR940X, DR960X, DR980X, DR1000X.
- DR100X and DR140X poles are for the current existing template system and installation compatibility.
- DR140X and DR160X poles cannot be installed on DR140X, DR160X, DR180X, DR200X, DR220X, DR240X, DR260X, DR280X, DR300X, DR320X, DR340X, DR360X, DR380X, DR400X, DR420X, DR440X, DR460X, DR480X, DR500X, DR520X, DR540X, DR560X, DR580X, DR600X, DR620X, DR640X, DR660X, DR680X, DR700X, DR720X, DR740X, DR760X, DR780X, DR800X, DR820X, DR840X, DR860X, DR880X, DR900X, DR920X, DR940X, DR960X, DR980X, DR1000X.
- DR100X and DR140X poles are for the current existing template system and installation compatibility.
- DR140X and DR160X poles cannot be installed on DR140X, DR160X, DR180X, DR200X, DR220X, DR240X, DR260X, DR280X, DR300X, DR320X, DR340X, DR360X, DR380X, DR400X, DR420X, DR440X, DR460X, DR480X, DR500X, DR520X, DR540X, DR560X, DR580X, DR600X, DR620X, DR640X, DR660X, DR680X, DR700X, DR720X, DR740X, DR760X, DR780X, DR800X, DR820X, DR840X, DR860X, DR880X, DR900X, DR920X, DR940X, DR960X, DR980X, DR1000X.
- DR100X and DR140X poles are for the current existing template system and installation compatibility.
- DR140X and DR160X poles cannot be installed on DR140X, DR160X, DR180X, DR200X, DR220X, DR240X, DR260X, DR280X, DR300X, DR320X, DR340X, DR360X, DR380X, DR400X, DR420X, DR440X, DR460X, DR480X, DR500X, DR520X, DR540X, DR560X, DR580X, DR600X, DR620X, DR640X, DR660X, DR680X, DR700X, DR720X, DR740X, DR760X, DR780X, DR800X, DR820X, DR840X, DR860X, DR880X, DR900X, DR920X, DR940X, DR960X, DR980X, DR1000X.
- DR100X and DR140X poles are for the current existing template system and installation compatibility.
- DR140X and DR160X poles cannot be installed on DR140X, DR160X, DR180X, DR200X, DR220X, DR240X, DR260X, DR280X, DR300X, DR320X, DR340X, DR360X, DR380X, DR400X, DR420X, DR440X, DR460X, DR480X, DR500X, DR520X, DR540X, DR560X, DR580X, DR600X, DR620X, DR640X, DR660X, DR680X, DR700X, DR720X, DR740X, DR760X, DR780X, DR800X, DR820X, DR840X, DR860X, DR880X, DR900X, DR920X, DR940X, DR960X, DR980X, DR1000X.
- DR100X and DR140X poles are for the current existing template system and installation compatibility.
- DR140X and DR160X poles cannot be installed on DR140X, DR160X, DR180X, DR200X, DR220X, DR240X, DR260X, DR280X, DR300X, DR320X, DR340X, DR360X, DR380X, DR400X, DR420X, DR440X, DR460X, DR480X, DR500X, DR520X, DR540X, DR560X, DR580X, DR600X, DR620X, DR640X, DR660X, DR680X, DR700X, DR720X, DR740X, DR760X, DR780X, DR800X, DR820X, DR840X, DR860X, DR880X, DR900X, DR920X, DR940X, DR960X, DR980X, DR1000X.
- DR100X and DR140X poles are for the current existing template system and installation compatibility.
- DR140X and DR160X poles cannot be installed on DR140X, DR160X, DR180X, DR200X, DR220X, DR240X, DR260X, DR280X, DR300X, DR320X, DR340X, DR360X, DR380X, DR400X, DR420X, DR440X, DR460X, DR480X, DR500X, DR520X, DR540X, DR560X, DR580X, DR600X, DR620X, DR640X, DR660X, DR680X, DR700X, DR720X, DR740X, DR760X, DR780X, DR800X, DR820X, DR840X, DR860X, DR880X, DR900X, DR920X, DR940X, DR960X, DR980X, DR1000X.
- DR100X and DR140X poles are for the current existing template system and installation compatibility.
- DR140X and DR160X poles cannot be installed on DR140X, DR160X, DR180X, DR200X, DR220X, DR240X, DR260X, DR280X, DR300X, DR320X, DR340X, DR360X, DR380X, DR400X, DR420X, DR440X, DR460X, DR480X, DR500X, DR520X, DR540X, DR560X, DR580X, DR600X, DR620X, DR640X, DR660X, DR680X, DR700X, DR720X, DR740X, DR760X, DR780X, DR800X, DR820X, DR840X, DR860X, DR880X, DR900X, DR920X, DR940X, DR960X, DR980X, DR1000X.
- DR100X and DR140X poles are for the current existing template system and installation compatibility.
- DR140X and DR160X poles cannot be installed on DR140X, DR160X, DR180X, DR200X, DR220X, DR240X, DR260X, DR280X, DR300X, DR320X, DR340X, DR360X, DR380X, DR400X, DR420X, DR440X, DR460X, DR480X, DR500X, DR520X, DR540X, DR560X, DR580X, DR600X, DR620X, DR640X, DR660X, DR680X, DR700X, DR720X, DR740X, DR760X, DR780X, DR800X, DR820X, DR840X, DR860X, DR880X, DR900X, DR920X, DR940X, DR960X, DR980X, DR1000X.
- DR100X and DR140X poles are for the current existing template system and installation compatibility.
- DR140X and DR160X poles cannot be installed on DR140X, DR160X, DR180X, DR200X, DR220X, DR240X, DR260X, DR280X, DR300X, DR320X, DR340X, DR360X, DR380X, DR400X, DR420X, DR440X, DR460X, DR480X, DR500X, DR520X, DR540X, DR560X, DR580X, DR600X, DR620X, DR640X, DR660X, DR680X, DR700X, DR720X, DR740X, DR760X, DR780X, DR800X, DR820X, DR840X, DR860X, DR880X, DR900X, DR920X, DR940X, DR960X, DR980X, DR1000X.
- DR100X and DR140X poles are for the current existing template system and installation compatibility.
- DR140X and DR160X poles cannot be installed on DR140X, DR160X, DR180X, DR200X, DR220X, DR240X, DR260X, DR280X, DR300X, DR320X, DR340X, DR360X, DR380X, DR400X, DR420X, DR440X, DR460X, DR480X, DR500X, DR520X, DR540X, DR560X, DR580X, DR600X, DR620X, DR640X, DR660X, DR680X, DR700X, DR720X, DR740X, DR760X, DR780X, DR800X, DR820X, DR840X, DR860X, DR880X, DR900X, DR920X, DR940X, DR960X, DR980X, DR1000X.
- DR100X and DR140X poles are for the current existing template system and installation compatibility.
- DR140X and DR160X poles cannot be installed on DR140X, DR160X, DR180X, DR200X, DR220X, DR240X, DR260X, DR280X, DR300X, DR320X, DR340X, DR360X, DR380X, DR400X, DR420X, DR440X, DR460X, DR480X, DR500X, DR520X, DR540X, DR560X, DR580X, DR600X, DR620X, DR640X, DR660X, DR680X, DR700X, DR720X, DR740X, DR760X, DR780X, DR800X, DR820X, DR840X, DR860X, DR880X, DR900X, DR920X, DR940X, DR960X, DR980X, DR1000X.
- DR100X and DR140X poles are for the current existing template system and installation compatibility.
- DR140X and DR160X poles cannot be installed on DR140X, DR160X, DR180X, DR200X, DR220X, DR240X, DR260X, DR280X, DR300X, DR320X, DR340X, DR360X, DR380X, DR400X, DR420X, DR440X, DR460X, DR480X, DR500X, DR520X, DR540X, DR560X, DR580X, DR600X, DR620X, DR640X, DR660X, DR680X, DR700X, DR720X, DR740X, DR760X, DR780X, DR800X, DR820X, DR840X, DR860X, DR880X, DR900X, DR920X, DR940X, DR960X, DR980X, DR1000X.
- DR100X and DR140X poles are for the current existing template system and installation compatibility.
- DR140X and DR160X poles cannot be installed on DR140X, DR160X, DR180X, DR200X, DR220X, DR240X, DR260X, DR280X, DR300X, DR32



- NOTES:
- PERMEABLE ASPHALT SURFACE COURSE TO HAVE 15-25% POROSITY. FOR PARKING AREAS, A POLYMER MODIFIED BINDER PG 64E-22 MUST BE USED. PERVIOUS PAVEMENT SURFACE COURSE TO HAVE MINIMUM TESTED INFILTRATION RATE OF 6.4 IN/HR (20 IN/HR IF USED FOR STORMWATER QUALITY CONTROL). REFER TO GEOTECHNICAL ENGINEERING REPORT FOR THICKNESS.
  - REFER TO NJ SWIMP MANUAL CHAPTER 9.6 AND NJDOT STANDARD SPECIFICATIONS FOR ROAD AND BRIDGE CONSTRUCTION FOR OPEN-GRADED FRICTION COURSE COMPOSITION, MIX DESIGN, & INSTALLATION TEMPERATURE SPECIFICATIONS.
  - STORAGE BED AGGREGATE MUST BE PLACED IN COSE LIFTS NOT TO EXCEED 6 INCHES AND COMPACTED USING PLATE COMPACTORS PER NJ SWIMP MANUAL.
  - AT LEAST ONE INSPECTION PORT, WITH A REMOVABLE CAP, MUST BE PROVIDED AT THE UPSTREAM AND DOWNSTREAM ENDS OF THE NETWORK OF PIPES WITH ITS LOCATION DENOTED IN THE MAINTENANCE PLAN. THE INSPECTION PORT MUST BE PLACED AT LEAST 3 FEET FROM ANY EDGE. ADDITIONALLY, EACH INSPECTION PORT MUST BE FLUSH WITH THE SURFACE OF THE SURFACE LAYER AND EXTEND DOWN TO THE UNDERDRAIN PIPE NETWORK. THE SIZE OF THE INSPECTION PORT MUST BE LARGE ENOUGH TO ALLOW FOR MAINTENANCE ACTIVITIES.
  - SEALANT, TOP COAT, AND OTHER TREATMENTS SHALL NOT BE USED ON THE PERVIOUS PAVEMENT COURSE. CONSTRUCTION MAY NOT TAKE PLACE DURING RAIN OR SNOW, NOR WHEN THE SUBSOIL IS FROZEN.
  - POST-CONSTRUCTION TESTING OF THE PERMEABLE ASPHALT SURFACE COURSE IS REQUIRED AND MUST CONFORM TO THE METHODS OF EITHER ASTM C1701: STANDARD TEST METHOD FOR INFILTRATION RATE OF IN-PLACE PERVIOUS CONCRETE OR ASTM C1701: STANDARD TEST METHOD FOR SURFACE INFILTRATION RATE OF PERMEABLE UNIT PAVEMENT SYSTEMS. AT LEAST THREE LOCATIONS MUST BE USED FOR THE TEST, AND THEY SHOULD BE SPACED EVENLY ACROSS THE PERVIOUS PAVING SYSTEM. FAILURE TO ACHIEVE THE MINIMUM DESIGN INFILTRATION RATE OF THE SURFACE COURSE AT ONE OR MORE LOCATIONS INDICATES THE SYSTEM CANNOT BE PUT IN SERVICE UNTIL THE SYSTEM IS CORRECTED TO YIELD ALL PASSING VALUES. UNLIKE THE TEST METHODOLOGY OUTLINED IN THE ASTM STANDARDS, THE TEST RESULTS MUST NOT BE AVERAGED. INCLUDE A LOG FOR RECORDING EACH LOCATION AND ITS TEST RESULT FOR FUTURE REFERENCE IN THE MAINTENANCE PLAN.
  - PERVIOUS PAVEMENT AREA SHALL BE PROTECTED FROM SEDIMENT-LADEN RUNOFF DURING CONSTRUCTION TO AVOID REDUCED POROSITY.



- NOTES:
- ALL CONCRETE SHALL HAVE A MINIMUM 28-DAY STRENGTH OF 4,000 PSI AND AIR-ENTRAINED.
  - SHOP DRAWINGS AND DESIGN OF PRECAST CONCRETE STRUCTURES SHALL BE PROVIDED TO THE ENGINEER OF RECORD FOR REVIEW PRIOR TO CONSTRUCTION AND SHALL BE SIGNED AND SEALED BY THE CONTRACTOR'S PROFESSIONAL ENGINEER LICENSED IN THE PROJECT'S STATE. PRECAST CONCRETE STRUCTURE SHALL BE DESIGNED FOR H-25 LOADING.
  - 2x2 INLET FRAME AND GRATE TO BE CAMPBELL FOUNDRY CO. SLAB TYPE NO. 2847 OR APPROVED EQUIVALENT. FRAMES SHALL BE ANCHORED IN PLACE.
  - ALL REINFORCING BARS TO BE ASTM A615 GRADE 60.
  - TRENCH DRAIN AND GRATE SHALL BE CAMPBELL FOUNDRY CO. NO. 4202C OR APPROVED EQUIVALENT. FRAME TO BE CAST INTO PRECAST STRUCTURE.



**PERVIOUS ASPHALT PAVEMENT WITH UNDERDRAIN**

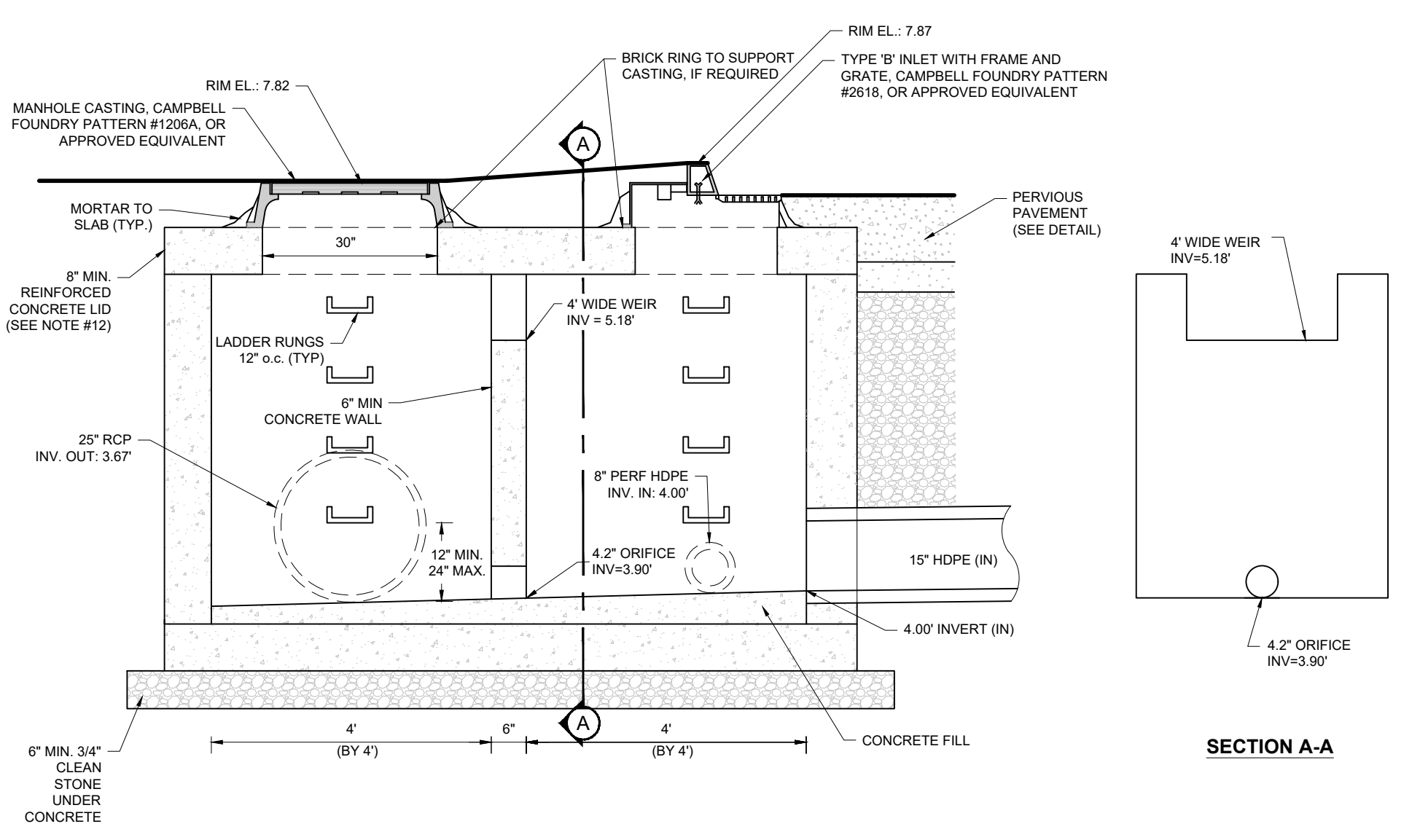
NOT TO SCALE

(NJ-S010103 - 01/2025)

**TRENCH DRAIN WITH 2' x 2' INLET**

NOT TO SCALE

(NJ-U010206 - 07/2024)

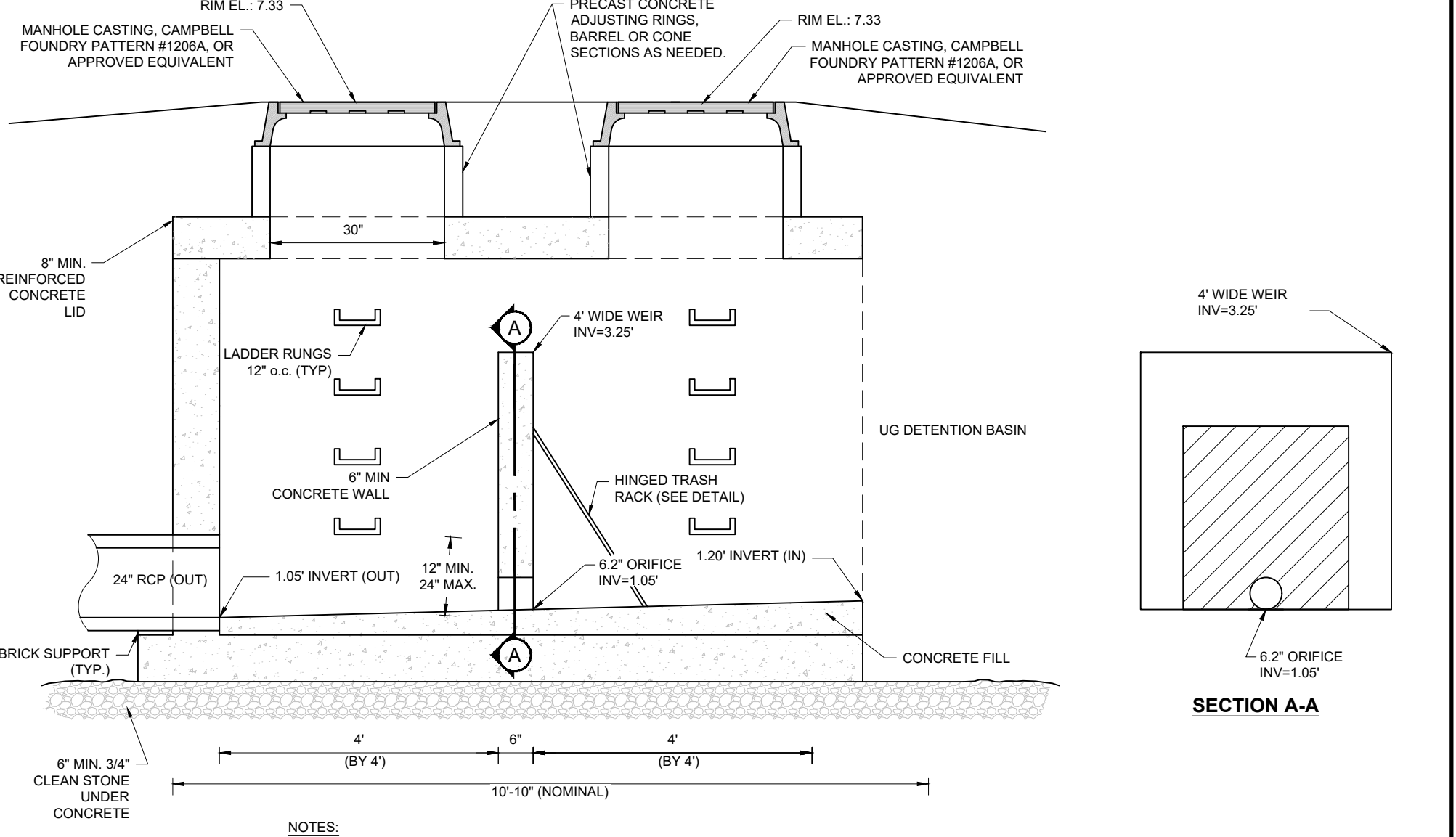


- NOTES:
- FOR INVERTS, PIPE SIZES AND ELEVATIONS, SEE PLANS.
  - THE CONCRETE STRUCTURE SHALL BE PRECAST CONCRETE TO MEET A MINIMUM OF H-25 LOADING. ALL UNITS SHALL BE CONSTRUCTED AND REINFORCED IN ACCORDANCE WITH THE APPROPRIATE ASTM, ACI, NJPDES, AND AASHTO STANDARDS. ALL PRECAST SECTIONS SHALL BE JOINED USING A GASKET AND CEMENT GROUT TO PRODUCE A "LEAK-PROOF" JOINT.
  - ALL STRUCTURAL CONCRETE TO BE NJDOT CLASS "B", A/E.
  - THE INLET GRATE SHALL BE BICYCLE SAFE WITH A CURB PIECE OF TYPE "NECO". CONTRACTOR TO VERIFY WITH MUNICIPALITY THE TYPE OF ECO CURB PIECE AND GRATE TO BE USED.
  - THE INLET FRAME AND GRATE COVER AND MANHOLE FRAME/RIM SHALL BE FABRICATED TO MEET A MINIMUM OF H-25 LOADING, UNLESS PRE-APPROVED IN WRITING BY THE ENGINEER, OR UNLESS NOTED ON THE INDIVIDUAL STRUCTURE NOTES.
  - ALL PIPES SHALL EXTEND NO MORE THAN 1 INCH INTO THE STRUCTURE.
  - A CONCRETE PIPE FLOW CHANNEL SHALL BE INSTALLED IN THE STRUCTURE BOTTOM, AFTER ALL THE PIPES ARE INSTALLED, OR THE FLOW CHANNELS CAN BE PRECAST WITH THE BASE.
  - STORM DRAIN INLET LABEL SHOULD READ "NO DUMPING, DRAINS TO WATERWAYS" OR OTHERWISE APPROVED BY THE ENGINEER. FISH LOGS SHALL ALSO BE INCLUDED ON BOTH SIDES OF THE LABEL.
  - UNLESS INDICATED OTHERWISE ALL CONSTRUCTION TO COMPLY WITH DOT SPECIFICATIONS.
  - ROCK SCREEN SHALL BE STAINLESS STEEL WITH 1/2 INCH OPENINGS.
  - CONTRACTOR AND/OR PRECASTER TO PROVIDE SHOP DRAWINGS FOR REVIEW BY ENGINEER PRIOR TO FABRICATION.

**OUTLET STRUCTURE FOR PERVIOUS PAVEMENT**

NOT TO SCALE

(NJ-U010408 - 09/2023)

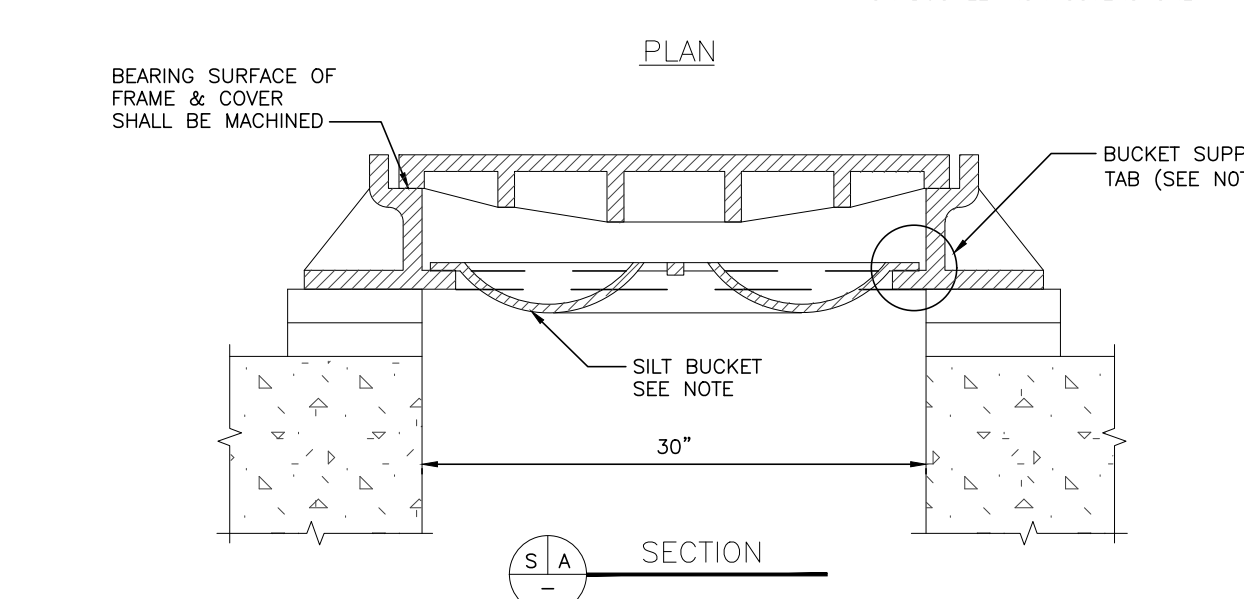
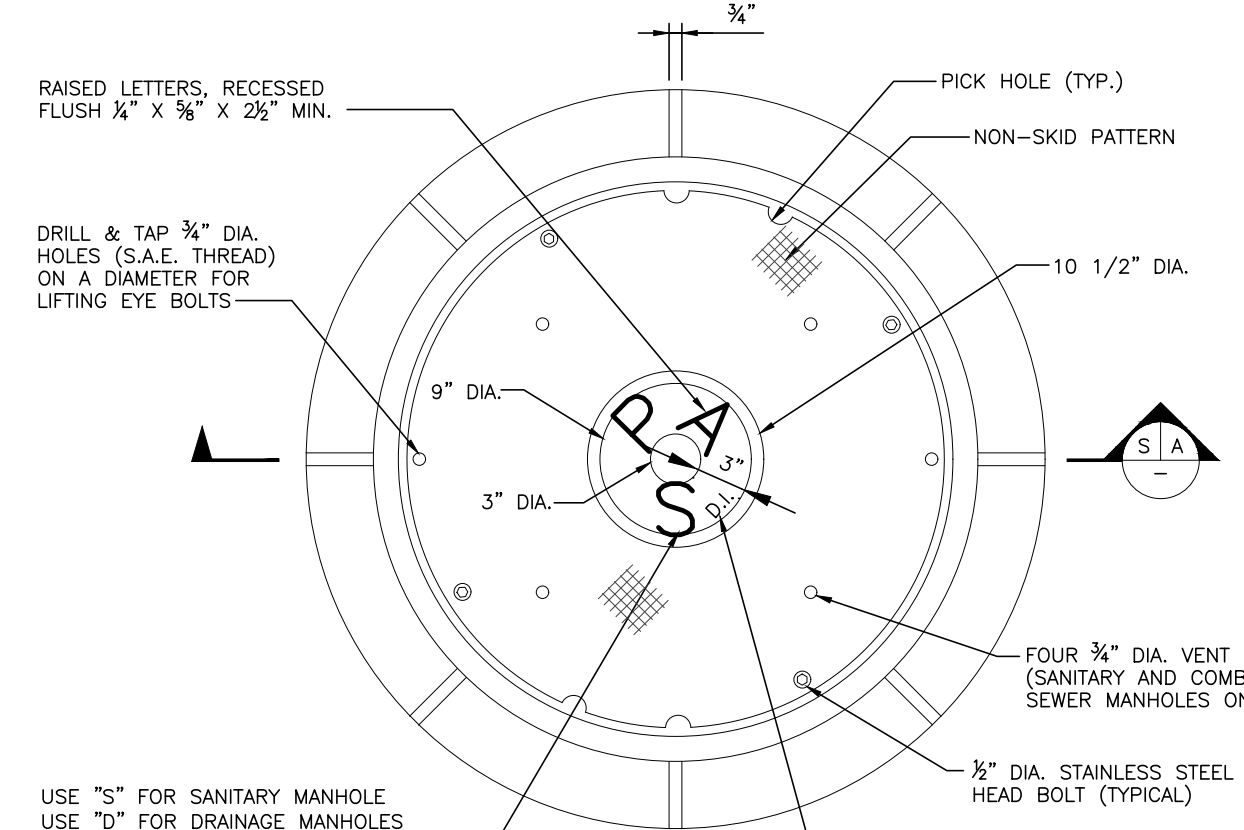


- NOTES:
- FOR INVERTS, PIPE SIZES AND ELEVATIONS, SEE PLANS.
  - THE 2' x 2' INLET CONCRETE STRUCTURE SHALL BE PRECAST CONCRETE TO MEET A MINIMUM OF H-25 LOADING. ALL UNITS SHALL BE CONSTRUCTED AND REINFORCED IN ACCORDANCE WITH THE APPROPRIATE ASTM, ACI, NJPDES, AND AASHTO STANDARDS. ALL PRECAST SECTIONS SHALL BE JOINED USING A GASKET AND CEMENT GROUT TO PRODUCE A "LEAK-PROOF" JOINT.
  - THE INLET GRATE SHALL BE BICYCLE SAFE WITH A CURB PIECE OF TYPE "NECO" AS DEFINED BY CAMPBELL FOUNDRY COMPANY PATTERN NO. 2818, OR EQUIVALENT. CONTRACTOR TO VERIFY WITH MUNICIPALITY THE TYPE OF ECO CURB PIECE AND GRATE TO BE USED.
  - THE INLET FRAME AND GRATE COVER SHALL BE FABRICATED TO MEET A MINIMUM OF H-25 LOADING, UNLESS PRE-APPROVED IN WRITING BY THE ENGINEER, OR UNLESS NOTED ON THE INDIVIDUAL STRUCTURE NOTES.
  - ALL PIPES SHALL EXTEND NO MORE THAN 1 INCH INTO THE STRUCTURE.
  - A 200 PSI MIN. CONCRETE PIPE FLOW CHANNEL SHALL BE INSTALLED IN THE STRUCTURE BOTTOM, AFTER ALL THE PIPES ARE INSTALLED, OR THE FLOW CHANNELS CAN BE PRECAST WITH THE BASE.
  - THE CLEAR SPACE IN THE CURB OPENING OR EACH INDIVIDUAL CLEAR SPACE, IF THE CURB OPENING HAS 2 OR MORE CLEAR SPACES) MUST HAVE AN AREA OF NO MORE THAN 7 SQUARE INCHES OR BE NO GREATER THAN 2 INCHES ACROSS THE SMALLEST DIMENSION.
  - STORM DRAIN INLET LABEL SHOULD READ "NO DUMPING, DRAINS TO WATERWAYS" OR OTHERWISE APPROVED BY THE ENGINEER. FISH LOGS SHALL ALSO BE INCLUDED ON BOTH SIDES OF THE LABEL.
  - DETAIL IS FOR CAST IRON CLASS 30B ONLY. ANY OTHER CLASS OF CAST IRON OR TYPE OF MATERIAL MUST BE ON THE BUREAU OF MATERIALS APPROVED PRODUCTS LIST OR NEW TECHNOLOGYS AND PRODUCTS APPROVED PRODUCTS LIST.
  - UNLESS INDICATED OTHERWISE ALL CONSTRUCTION TO COMPLY WITH DOT SPECIFICATIONS.
  - TYPICAL DETAIL IS INTENDED FOR PIPE SIZES 30" DIA. OR SMALLER FOR PIPE 30" OR LARGER AN OVERSIZE INLET WITH SLAB TOP WILL BE REQUIRED. SHOP DRAWING SHALL BE PROVIDED TO ENSURE THE APPROVAL PRIOR TO FABRICATION.
  - WHEN PRE-CAST, PRECASTER TO PROVIDE SHOP DRAWING FOR REVIEW BY ENGINEER PRIOR TO FABRICATION.
  - ALL STRUCTURAL CONCRETE TO BE MIN. 4000 PSI.

**OUTLET STRUCTURE WITH MANHOLES**

NOT TO SCALE

(NJ-U010410 - 09/2023)



- NOTE:
- FOR SANITARY AND COMBINED SEWER MANHOLES FURNISH CAST ALUMINUM SILT BUCKETS AND PROVIDE BUCKET SUPPORT TABS IN FRAME.
- DETAIL REFERENCE: DETAILS PROVIDED/PREPARED BY OTHERS AND IS FROM THE PORT AUTHORITY OF NJ/NJ. REFER TO OUTSIDE NOTES ON SHEET 2.

**PORT AUTHORITY MANHOLE MANHOLE FRAME DETAIL (AIR SIDE)**

NOT TO SCALE

(PORT AUTHORITY STANDARDS)

**BOHLER**  
 SITE CIVIL AND CONSULTING ENGINEERING  
 PROGRAM MANAGEMENT  
 LANDSCAPE ARCHITECTURE  
 SUSTAINABLE DESIGN  
 PERMITTING SERVICES  
 TRANSPORTATION SERVICES

**REVISIONS**

REV	DATE	COMMENT	DRAWN BY

**811**  
 Know what's below.  
 Call before you dig.  
 NEW JERSEY  
 YOU MUST CALL 811 BEFORE ANY EXCAVATION WHETHER IT'S ON PRIVATE OR PUBLIC LAND.  
 1-800-272-1000  
 www.811-nj.org

**ISSUED FOR MUNICIPAL & AGENCY REVIEW & APPROVAL**

THIS DRAWING IS INTENDED FOR MUNICIPAL AND/OR AGENCY REVIEW AND APPROVAL. IT IS NOT INTENDED AS A CONSTRUCTION DOCUMENT UNLESS INDICATED OTHERWISE.

PROJECT No.: NJC240059 00-0E  
 DRAWN BY: CTC  
 CHECKED BY: BE  
 DATE: 10/28/2025  
 CAD ID: P-CIVL-CND5

**SITE DEVELOPMENT PLANS**  
 FOR  
**SIGNATURE AVIATION USA, LLC**  
 PROPOSED EAST SIDE RAMP EXPANSION & HANGAR  
 TETERBORO AIRPORT  
 FRED WEHRAN DRIVE  
 BOROUGH OF TETERBORO  
 BERGEN COUNTY, NEW JERSEY

**BOHLER**  
 BOHLER ENGINEERING NJ, LLC  
 125 HALF MILE ROAD, SUITE 207  
 RED BANK, NJ 07701  
 Phone: (732) 825-6800  
 www.BohlerEngineering.com  
 NJ CERT. OF AUTHORIZATION NO. 24G028191700 & M6000122

**J.A. HOLLZAPFEL**  
 PROFESSIONAL ENGINEER  
 NEW JERSEY LICENSE NO. 240000000000

SHEET TITLE:  
**CONSTRUCTION DETAILS**  
 SHEET NUMBER:  
**12**  
 OF 17  
 ORG. DATE - 10/28/2025

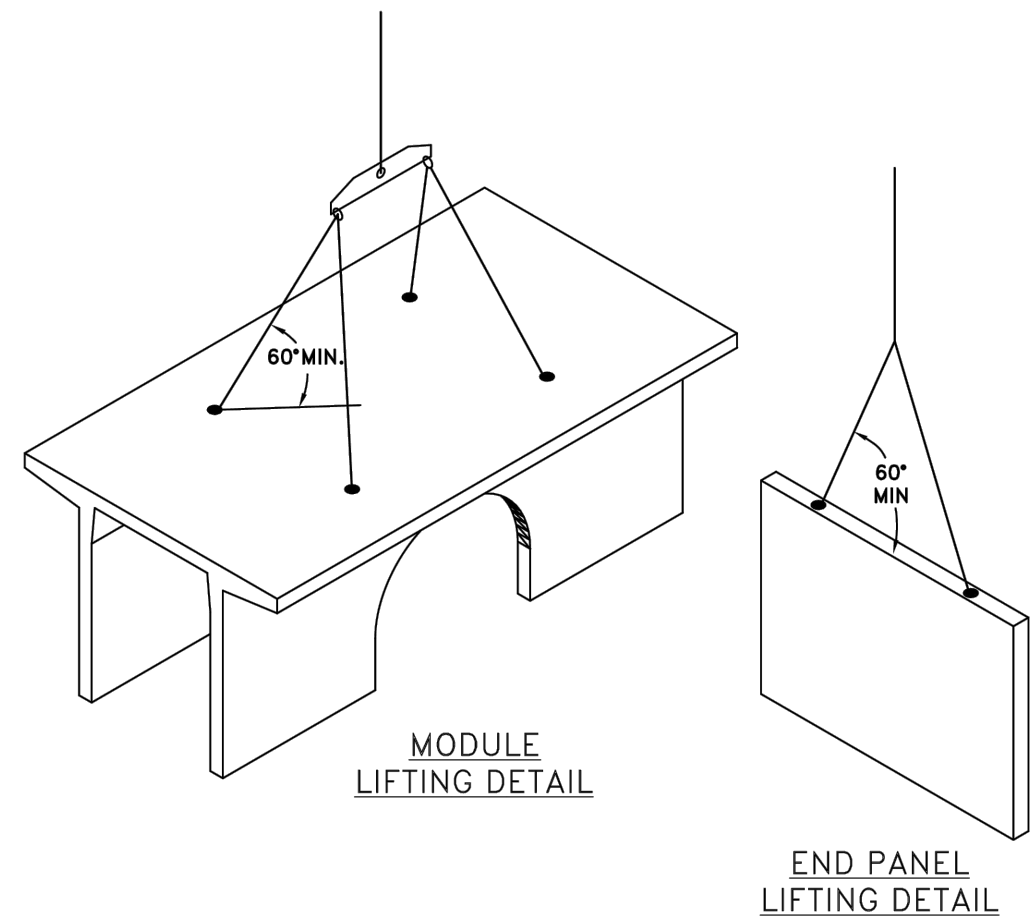






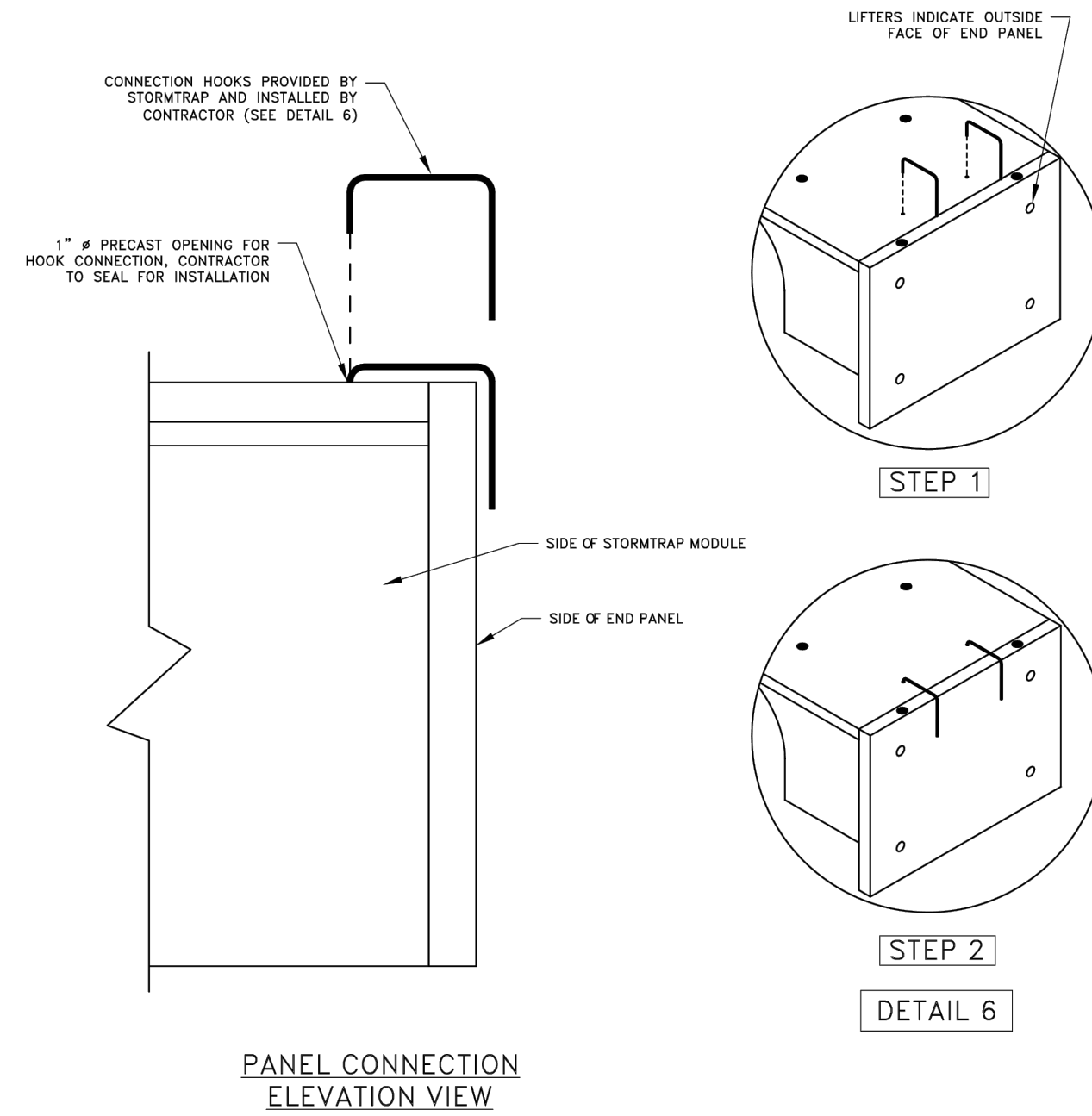
**STORMTRAP MODULE LIFTING SPECIFICATION**

- IT IS THE CONTRACTOR'S RESPONSIBILITY TO ENSURE THAT ALL (4) CHAINS/CABLES ARE SECURED PROPERLY TO THE LIFTING ANCHORS AND IN EQUAL TENSION WHEN LIFTING THE STORMTRAP MODULE.
- MINIMUM 7'-0" CHAIN/CABLE LENGTH TO BE USED TO LIFT STORMTRAP MODULES (SUPPLIED BY CONTRACTOR).
- CONTRACTOR TO ENSURE MINIMUM LIFTING ANGLE IS 60° FROM TOP SURFACE OF STORMTRAP MODULE. SEE DETAIL.
- IT IS UNDERSTOOD AND AGREED THAT AT ALL TIMES DURING WHICH HOISTING AND RIGGING EQUIPMENT IS BEING SUPPLIED TO THE PURCHASER, OPERATOR OF SUCH EQUIPMENT SHALL BE IN CHARGE OF HIS ENTIRE EQUIPMENT AND SHALL AT ALL TIMES BE THE JUDGE OF THE SAFETY AND PROPERTY OF ANY SUGGESTION TO HIM FROM THE SELLER, ITS AGENTS OR EMPLOYEES. PURCHASER AGREES TO SAVE, INDEMNIFY AND HOLD HARMLESS SELLER FROM ALL LOSS, CLAIMS, DEMANDS OR CAUSES OF ACTION, WHICH MAY ARISE FROM THE EXISTENCE OR OPERATION OF SAID EQUIPMENT.



**END PANEL ERECTION/INSTALLATION SPECIFICATION**

- END PANELS WILL BE SUPPLIED TO CLOSE OFF OPEN ENDS OF ROWS.
- PANELS SHALL BE INSTALLED IN A TILT UP FASHION DIRECTLY ADJACENT TO OPEN END OF MODULE (REFER TO SHEET 2.0 FOR END PANEL LOCATIONS). SIDE WITH LIFTERS INDICATES OUTSIDE FACE.
- CONNECTION HOOKS WILL BE SUPPLIED WITH END PANELS TO SECURELY CONNECT PANEL TO ADJACENT STORMTRAP MODULE (SEE PANEL CONNECTION ELEVATION VIEW).
- ONCE CONNECTION HOOK IS ATTACHED, LIFTING CLUTCHES MAY BE REMOVED.
- JOINT WRAP SHALL BE PLACED AROUND PERIMETER JOINT PANEL (SEE SHEET 3.0).



**StormTrap**

1267 WINDHAM PARKWAY  
ROSEMOUNT, IL 60446  
P815-941-4549 / F331-318-5347

**ENGINEER INFORMATION:**  
Bohler Engineering  
30 Independence Blvd  
Suite 200  
Warren, NJ  
908-668-8300

**PROJECT INFORMATION:**  
Signature Flight Support  
100-Yr Future Storage

Teterboro, NJ  
CURRENT ISSUE DATE:  
08/11/2025

ISSUED FOR:  
PRELIMINARY

REV.	DATE:	ISSUED FOR:	OWN BY:

SCALE:  
NTS

SHEET TITLE:  
SINGLETRAP  
INSTALLATION  
SPECIFICATION

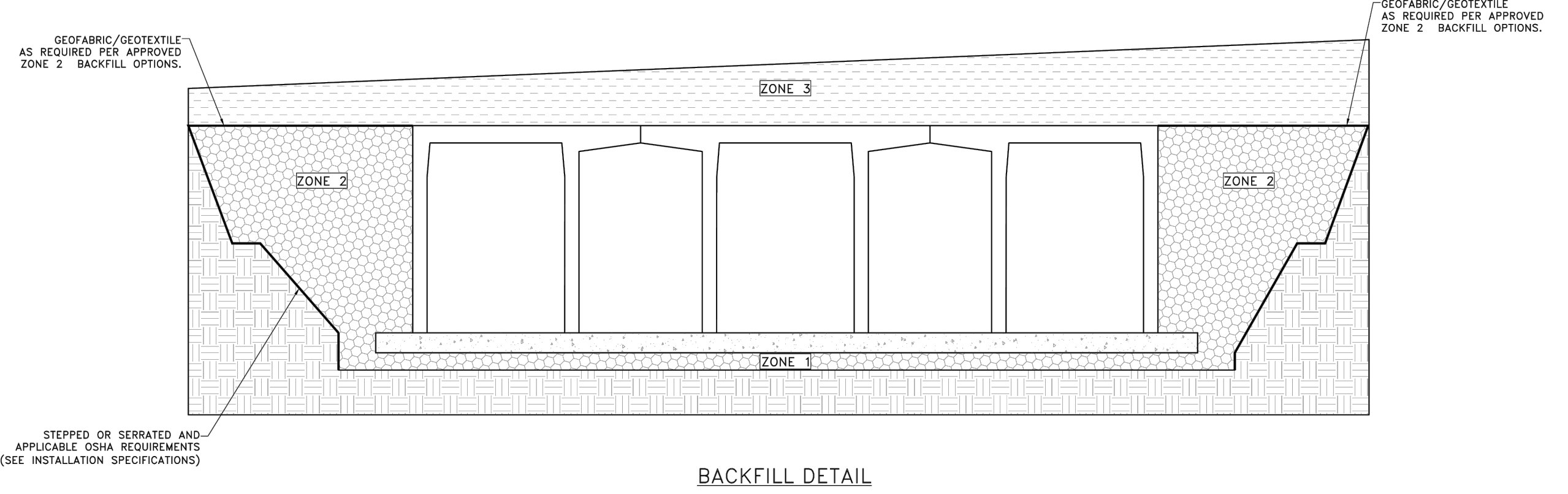
SHEET NUMBER:  
3.1

ZONE CHART		
ZONES	ZONE DESCRIPTIONS	REMARKS
ZONE 1	FOUNDATION AGGREGATE	#5 (3") STONE ANGULAR AGGREGATE (SEE NOTE 4)
ZONE 2	BACKFILL	UNIFIED SOILS CLASSIFICATION (GW, GP, SW, SP) OR SEE BELOW FOR APPROVED BACKFILL OPTIONS
ZONE 3	FINAL COVER OVERTOP	MATERIALS NOT TO EXCEED 120 PCF

FILL DEPTH	TRACK WIDTH	MAX VEHICLE WEIGHT (KIPS)	MAX GROUND PRESSURE
12"	12"	51.8	1690 psf
18"	18"	56.1	1219 psf
24"	24"	68.1	1111 psf
30"	30"	76.7	1000 psf
36"	36"	85.0	924 psf

NOTE:  
TRACK LENGTH NOT TO EXCEED 15'-4".  
ONLY TWO TRACKS PER VEHICLE.

APPROVED ZONE 2 BACKFILL OPTIONS	
OPTION	REMARKS
1" STONE AGGREGATE	THE STONE AGGREGATE SHALL CONSIST OF CLEAN AND FREE DRAINING ANGULAR MATERIAL. THE SIZE OF THIS MATERIAL SHALL HAVE 100% PASSING THE 1" SIEVE WITH 0% TO 5% PASSING THE #8 SIEVE. THIS MATERIAL SHALL BE SEPARATED FROM NATIVE MATERIAL USING GEOTEXTILE/GEOTEXTILE AS PER APPROVED ZONE 2 BACKFILL OPTIONS.
SAND	IMPORTED PURE SAND IS PERMITTED TO BE USED AS BACKFILL IF IT IS CLEAN AND FREE DRAINING. THE SAND USED FOR BACKFILLING SHALL HAVE LESS THAN 40% PASSING #40 SIEVE AND LESS THAN 5% PASSING #200 SIEVE. THIS MATERIAL SHALL BE SEPARATED FROM NATIVE MATERIAL USING GEOTEXTILE/GEOTEXTILE AS PER APPROVED ZONE 2 BACKFILL OPTIONS.
CRUSHED CONCRETE AGGREGATE	CLEAN, FREE DRAINING CRUSHED CONCRETE AGGREGATE MATERIAL CAN BE USED AS BACKFILL FOR STORMTRAP'S MODULES. THE SIZE OF THIS MATERIAL SHALL HAVE 100% PASSING THE 1" SIEVE WITH 0% TO 5% PASSING THE #8 SIEVE. THIS MATERIAL SHALL BE SEPARATED FROM NATIVE MATERIAL USING GEOTEXTILE/GEOTEXTILE AS PER APPROVED ZONE 2 BACKFILL OPTIONS.
ROAD PACK	STONE AGGREGATE 100% PASSING THE 1-1/2" SIEVE WITH LESS THAN 12% PASSING THE #200 SIEVE (ASTM SIZE #467), GEOTEXTILE AS PER GEOTECHNICAL ENGINEER RECOMMENDATION.



STEPPED OR SERRATED AND APPLICABLE OSHA REQUIREMENTS (SEE INSTALLATION SPECIFICATIONS)

BACKFILL DETAIL

**StormTrap**

1267 WINDHAM PARKWAY  
ROSEMOUNT, IL 60446  
P815-941-4549 / F331-318-5347

**ENGINEER INFORMATION:**  
Bohler Engineering  
30 Independence Blvd  
Suite 200  
Warren, NJ  
908-668-8300

**PROJECT INFORMATION:**  
Signature Flight Support  
100-Yr Future Storage

Teterboro, NJ  
CURRENT ISSUE DATE:  
08/11/2025

ISSUED FOR:  
PRELIMINARY

REV.	DATE:	ISSUED FOR:	OWN BY:

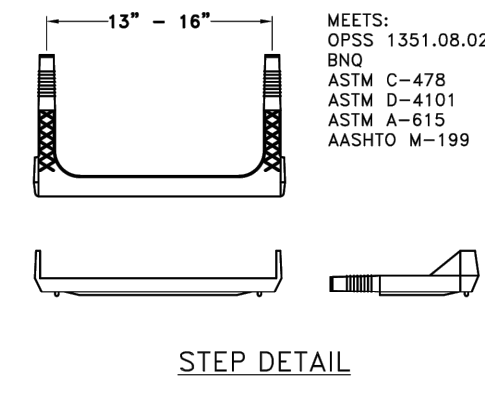
SCALE:  
NTS

SHEET TITLE:  
SINGLETRAP  
BACKFILL  
SPECIFICATION

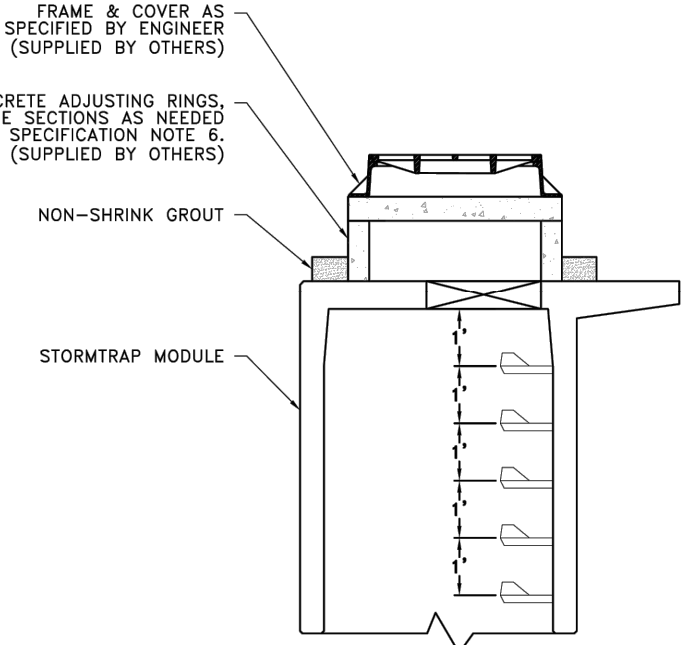
SHEET NUMBER:  
4.0

**ACCESS OPENING SPECIFICATION**

- A TYPICAL ACCESS OPENING FOR THE STORMTRAP SYSTEM ARE 2'-0" IN DIAMETER. ACCESS OPENINGS LARGER THAN 4'-0" IN DIAMETER NEED TO BE APPROVED BY STORMTRAP. ALL OPENINGS MUST RETAIN AT LEAST 2'-0" OF CLEARANCE FROM THE END OF THE STORMTRAP MODULE UNLESS NOTED OTHERWISE. ALL ACCESS OPENINGS TO BE LOCATED ON INSIDE LEG UNLESS OTHERWISE SPECIFIED. SEE SHEET 2.0 FOR SIZES AND LOCATIONS.
- UNLESS OTHERWISE SPECIFIED, PLASTIC COATED STEPS ARE PROVIDED INSIDE ANY MODULE WHERE DEEMED NECESSARY. THE HIGHEST STEP IN THE MODULE IS TO BE PLACED A DISTANCE OF 1'-0" FROM THE INSIDE EDGE OF THE STORMTRAP MODULES. ALL ENSURING STEPS SHALL BE PLACED AT A DISTANCE BETWEEN 10" MIN AND 14" MAX BETWEEN THEM. STEPS MAY BE MOVED OR ALTERED TO AVOID OPENINGS OR OTHER IRREGULARITIES IN THE MODULE.
- STORMTRAP LIFTING INSERTS MAY BE RELOCATED TO AVOID INTERFERENCE WITH ACCESS OPENINGS OR THE CENTER OF GRAVITY OF THE MODULE AS NEEDED.
- STORMTRAP ACCESS OPENINGS MAY BE RELOCATED TO AVOID INTERFERENCE WITH INLET AND/OR OUTLET PIPE OPENINGS SO PLACEMENT OF STEPS IS ATTAINABLE.
- ACCESS OPENINGS SHOULD BE LOCATED IN ORDER TO MEET THE APPROPRIATE MUNICIPAL REQUIREMENTS. STORMTRAP RECOMMENDS AT LEAST TWO ACCESS OPENINGS PER SYSTEM FOR ACCESS AND INSPECTION.
- USE PRECAST ADJUSTING RINGS AS NEEDED TO MEET GRADE. STORMTRAP RECOMMENDS FOR COVER OVER 2" TO USE PRECAST BARREL OR CONE SECTIONS. (PROVIDED BY OTHERS)



STEP DETAIL



RISER/STAIR DETAIL

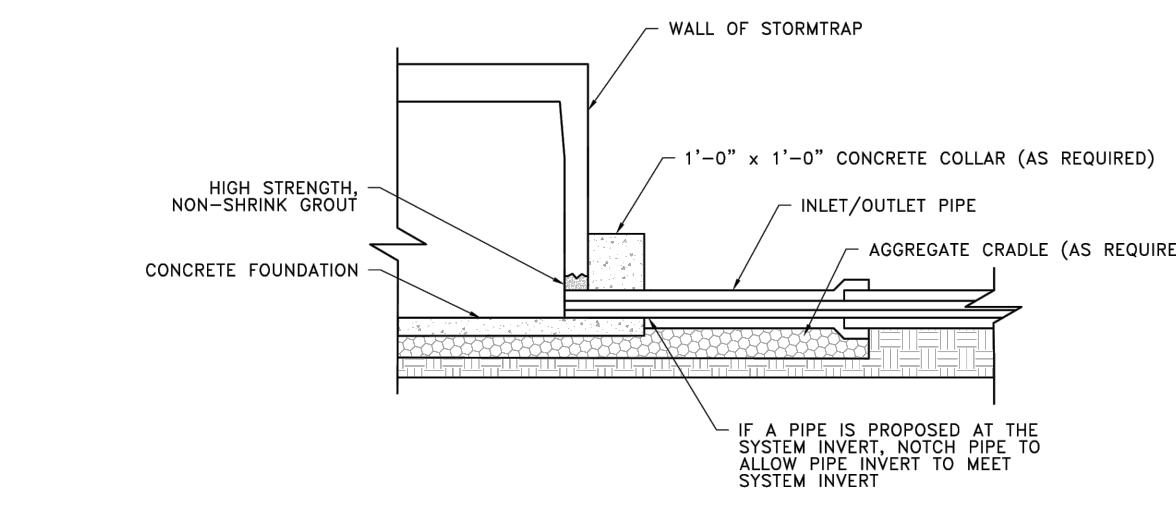
**PIPE OPENING SPECIFICATION**

- MINIMUM EDGE DISTANCE FOR AN OPENING ON THE OUTSIDE WALL SHALL BE NO LESS THAN 1'-0".
- CONNECTING PIPES MAY BE INSTALLED WITH A 1'-0" CONCRETE COLLAR AND AN AGGREGATE CRADLE (AS REQUIRED) FOR AT LEAST ONE PIPE LENGTH (SEE PIPE CONNECTION DETAIL). A STRUCTURAL GRADE CONCRETE OR HIGH STRENGTH, NON-SHRINK GROUT WITH A MINIMUM 28 DAY COMPRESSIVE STRENGTH OF 3000 PSI MAY BE USED.
- THE ANNULAR SPACE BETWEEN THE PIPE AND THE HOLE SHALL BE FILLED WITH HIGH STRENGTH NON-SHRINK GROUT.

**PIPE INSTALLATION INSTRUCTIONS**

- CLEAN AND LIGHTLY LUBRICATE ALL OF THE PIPE TO BE INSERTED INTO STORMTRAP.
- IF PIPE IS CUT, CARE SHOULD BE TAKEN TO ALLOW NO SHARP EDGES. BEVEL AND LUBRICATE LEAD END OF PIPE.
- ALIGN CENTER OF PIPE TO CORRECT ELEVATION AND INSERT INTO OPENING.

NOTE: ALL ANCILLARY PRODUCTS/SPECIFICATIONS RECOMMENDED AND SHOWN ON THIS SHEET INCLUDING BUT NOT LIMITED TO CONCRETE COLLARS, AGGREGATE CRADLES, GRADE RINGS, RISER SECTIONS, ETC., ARE RECOMMENDATIONS ONLY AND SUBJECT TO CHANGE PER THE INSTALLING CONTRACTOR AND/OR PER LOCAL MUNICIPAL CODE/REQUIREMENTS.



NOTCHED PIPE CONNECTION DETAIL WHEN PIPE INVERT IS AT INVERT OF STORMTRAP SYSTEM

**StormTrap**

1267 WINDHAM PARKWAY  
ROSEMOUNT, IL 60446  
P815-941-4549 / F331-318-5347

**ENGINEER INFORMATION:**  
Bohler Engineering  
30 Independence Blvd  
Suite 200  
Warren, NJ  
908-668-8300

**PROJECT INFORMATION:**  
Signature Flight Support  
100-Yr Future Storage

Teterboro, NJ  
CURRENT ISSUE DATE:  
08/11/2025

ISSUED FOR:  
PRELIMINARY

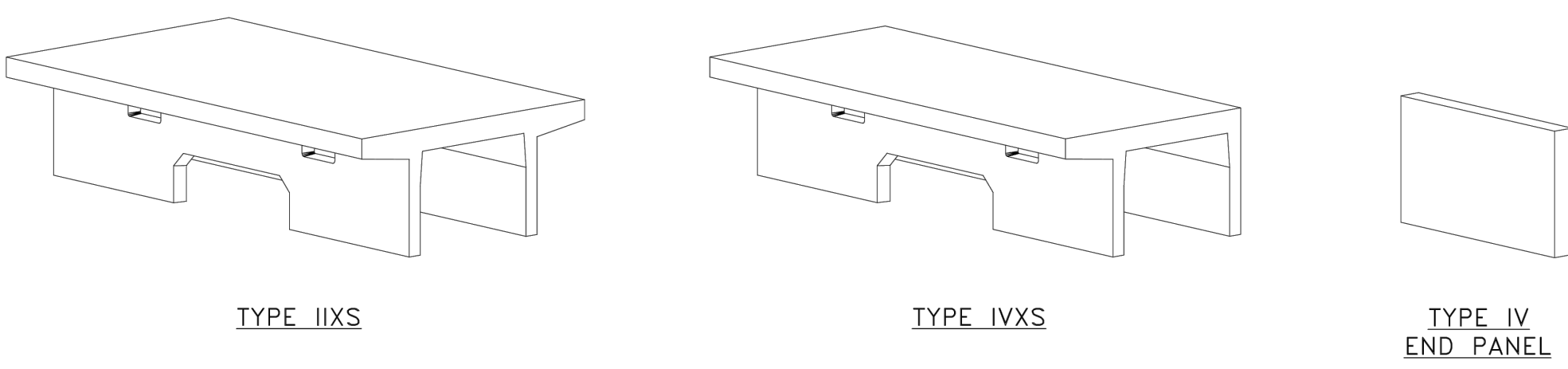
REV.	DATE:	ISSUED FOR:	OWN BY:

SCALE:  
NTS

SHEET TITLE:  
PIPE / ACCESS  
OPENING  
SPECIFICATION

SHEET NUMBER:  
5.0

- NOTES:
- OPENING LOCATIONS AND SHAPES MAY VARY.
  - SP - INDICATES A MODULE WITH MODIFICATIONS.
  - P - INDICATES A MODULE WITH A PANEL ATTACHMENT.
  - POCKET WINDOW OPENINGS ARE OPTIONAL.



TYPE IIXS

TYPE IVXS

TYPE IV  
END PANEL

**StormTrap**

1267 WINDHAM PARKWAY  
ROSEMOUNT, IL 60446  
P815-941-4549 / F331-318-5347

**ENGINEER INFORMATION:**  
Bohler Engineering  
30 Independence Blvd  
Suite 200  
Warren, NJ  
908-668-8300

**PROJECT INFORMATION:**  
Signature Flight Support  
100-Yr Future Storage

Teterboro, NJ  
CURRENT ISSUE DATE:  
08/11/2025

ISSUED FOR:  
PRELIMINARY

REV.	DATE:	ISSUED FOR:	OWN BY:

SCALE:  
NTS

SHEET TITLE:  
SINGLETRAP  
MODULE TYPES

SHEET NUMBER:  
6.0

DETAIL REFERENCE:  
(78.76 3529.1' 35(355' 27+58 \$1'.6 1520 672507 5(115 72 2876.1 127(6 21 6+(17

**BOHLER**  
SITE CIVIL AND CONSULTING ENGINEERING  
PROGRAM MANAGEMENT  
LANDSCAPE ARCHITECTURE  
SUSTAINABLE DESIGN  
PERMITTING SERVICES  
TRANSPORTATION SERVICES

**REVISIONS**

REV	DATE	COMMENT	BY

**811**  
Know what's below.  
Call before you dig.  
NEW JERSEY  
YOU MUST CALL 811 BEFORE ANY EXCAVATION  
WHETHER IT'S ON PRIVATE OR PUBLIC LAND.  
1-800-272-1000  
222 0M FOOD RUJ

**ISSUED FOR MUNICIPAL & AGENCY REVIEW & APPROVAL**

THIS DRAWING IS INTENDED FOR MUNICIPAL AND/OR AGENCY REVIEW AND APPROVAL. IT IS NOT INTENDED AS A CONSTRUCTION DOCUMENT UNLESS INDICATED OTHERWISE.

PROJECT No.: 1-8 & 78  
DRAWN BY: 87  
CHECKED BY: 87  
DATE: 3, 8, 9, 1  
CAD ID: 3, 8, 9, 1

**SITE DEVELOPMENT PLANS**  
FOR  
**SIGNATURE AVIATION USA, LLC**  
PROPOSED EAST SIDE RAMP EXPANSION & HANGAR  
TETERBORO AIRPORT  
FRED WEHRAN DRIVE  
BOROUGH OF TETERBORO  
BERGEN COUNTY, NEW JERSEY

**BOHLER**  
125 HALF MILE ROAD, SUITE 207  
RED BANK, NJ 07701  
3 KRQH  
ZZZ R KOHU (QJL ORPH ULQ

**J.A. HOLZAPFEL**  
PROFESSIONAL ENGINEER  
LICENSED IN THE STATE OF NEW JERSEY

**CONSTRUCTION DETAILS**

SHEET NUMBER:  
**16**

ORG. DATE - 10/28/2025

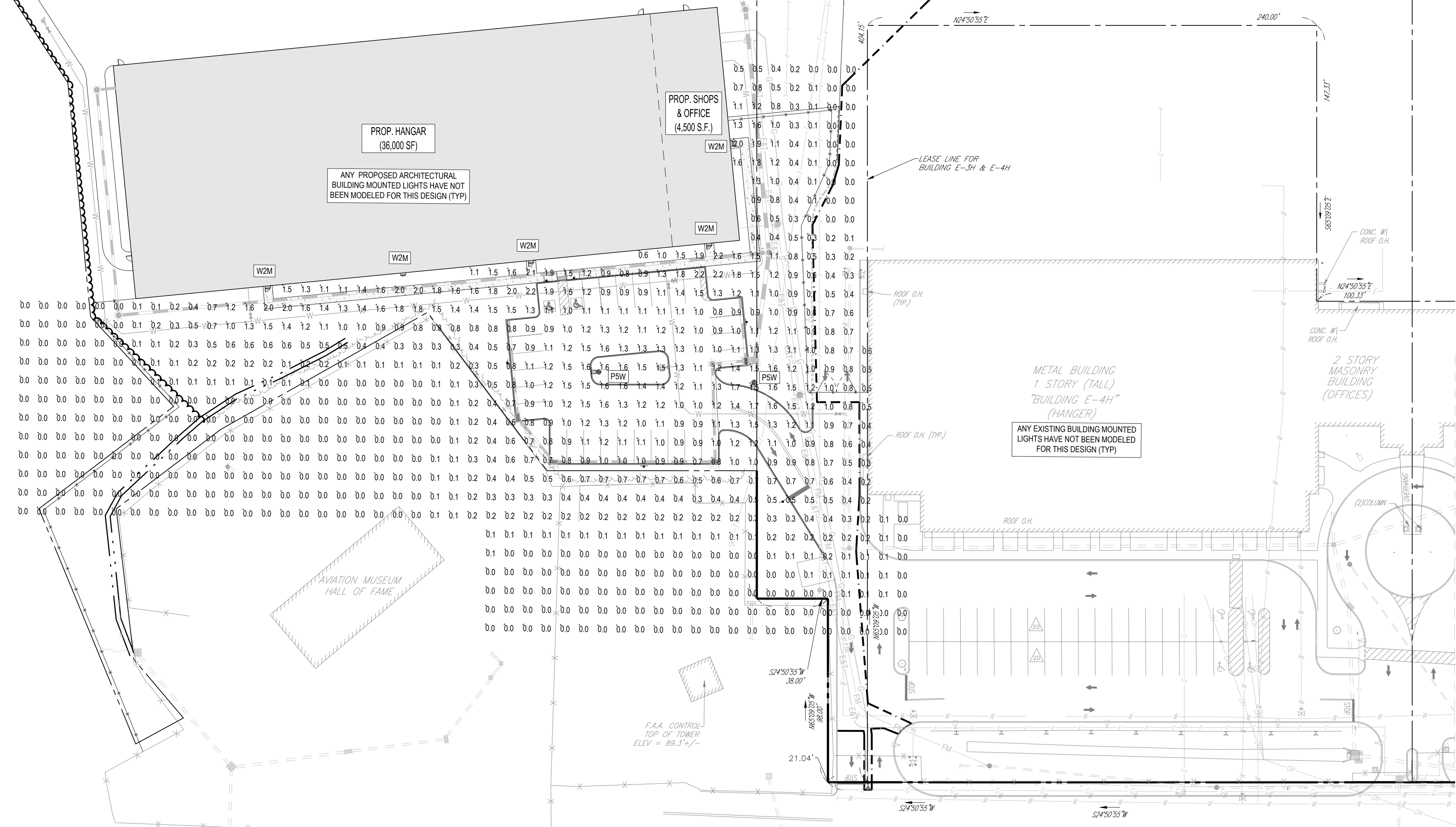


Symbol	Qty	Mounting Height	Label	Arrangement	LLF	Description	Lum. Lumens	Pole
⬇	2	20'-0" AFG	P5W	SINGLE	0.900	LITHONIA LIGHTING DSX1 SERIES LED AREA LIGHT (P5 40K 80CRI T5W)	17162	HOLOPHANE FRSS ROUND STRAIGHT STEEL POLE (FRSS 20 40B-0014NDR-BZ)
⬇	5	15'-0" AFF	W2M	SINGLE	0.900	LITHONIA LIGHTING DSXW1 SERIES LED WALL MOUNTED LIGHT (P5 40K 80CRI T2M)	4822	--

Label	CalcType	Units	Avg	Max	Min	Avg/Min	Max/Min
Ground Level Calcs	Illuminance	Fc	0.48	2.2	0.0	N.A.	N.A.
Sidewalk Calcs	Illuminance	Fc	1.64	2.2	0.5	3.28	4.40
Parking Area	Illuminance	Fc	1.13	2.2	0.7	1.61	3.14

BLOCK 203  
LOT 1

BLOCK 203  
LOT 1  
PROPOSED LEASE AREA  
AREA=228,743 S.F. OR 5.251 ACRES



**LITHONIA LIGHTING DSX1  
SERIES LED AREA LIGHT (P5W)**  
NOT TO SCALE



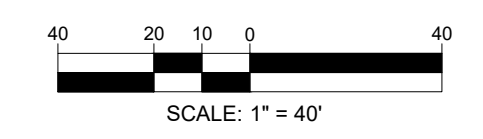
**LITHONIA LIGHTING DSXW1 SERIES LED WALL  
MOUNTED LIGHT (W2M)**  
NOT TO SCALE

**GENERAL LIGHTING NOTES:**

- THE GENERAL NOTES, FOUND ON THE NOTES PAGE OF THIS PLAN SET, MUST BE INCLUDED AS PART OF THIS ENTIRE DOCUMENT PACKAGE AND ARE PART OF THE CONTRACT DOCUMENTS. THE ELECTRICAL CONTRACTOR MUST BECOME FAMILIAR WITH, REFER TO AND FULLY COMPLY WITH THESE NOTES, IN THEIR ENTIRETY.
- THE ELECTRICAL CONTRACTOR MUST COMPLY WITH ALL APPLICABLE CONTRACTOR REQUIREMENTS INDICATED IN THIS LIGHTING PLAN, INCLUDING BUT NOT LIMITED TO GENERAL NOTES, GRADING AND UTILITY NOTES, SITE SAFETY, AND ALL APPLICABLE AGENCY AND GOVERNMENTAL REGULATIONS. THE LIGHTING PLAN DEPICTS PROPOSED, SUSTAINED ILLUMINATION LEVELS CALCULATED USING DATA PROVIDED BY THE NOTED MANUFACTURER(S). ACTUAL SUSTAINED SITE ILLUMINATION LEVELS AND PERFORMANCE OF LUMINAIRES MAY VARY DUE TO VARIATIONS IN WEATHER, ELECTRICAL VOLTAGE, TOLERANCE IN LAMPS, MAINTENANCE, THE SERVICE LIFE OF EQUIPMENT AND LUMINAIRES AND OTHER RELATED VARIABLE FIELD CONDITIONS.
- THE LIGHTING VALUES AND CALCULATION POINTS DEPICTED ON THIS PLAN ARE ANALYZED ON A HORIZONTAL GEOMETRIC PLANE AT GROUND LEVEL UNLESS OTHERWISE NOTED. ILLUMINATION LEVELS ARE SHOWN IN FOOT-CANDLES (FC).
- THE LIGHTING PLAN IS INTENDED TO SHOW THE LOCATIONS AND TYPE OF LUMINAIRES, POWER SYSTEM, CONDUITS, WIRING, CONTROLS, AND OTHER ELECTRICAL COMPONENTS ARE SOLELY THE ARCHITECT'S, ELECTRICAL ENGINEER'S AND/OR ELECTRICAL CONTRACTOR'S RESPONSIBILITY, AS INDICATED IN THE CONSTRUCTION CONTRACT DOCUMENTS. THE CONTRACTOR MUST COORDINATE WITH THE PROJECT ARCHITECT AND/OR ELECTRICAL ENGINEER REGARDING ANY AND ALL POWER SOURCES AND TIMING DEVICES NECESSARY TO MEET THE DESIGN INTENT. THESE ITEMS MUST BE INSTALLED AS REQUIRED BY FEDERAL, STATE AND LOCAL REGULATIONS. CONTRACTOR IS RESPONSIBLE FOR THE INSTALLATION OF LIGHTING FIXTURES AND APPURTENANCES IN ACCORDANCE WITH THE NATIONAL ELECTRIC CODE (NEC) AND ALL APPLICABLE BUILDING AND LOCAL ELECTRICAL CODES.
- THE ELECTRICAL CONTRACTOR MUST BRING IMMEDIATELY, IN WRITING, ANY LIGHT LOCATIONS THAT CONFLICT WITH DRAINAGE, UTILITIES, OR OTHER STRUCTURE(S) TO THE PROFESSIONAL OF RECORD'S ATTENTION, PRIOR TO THE START OF CONSTRUCTION.
- THE ELECTRICAL CONTRACTOR IS RESPONSIBLE TO ENSURE THAT ALL LIGHTING IS INSTALLED PER THIS LIGHTING PLAN, INCLUDING THE LOCATION, ORIENTATION, SHIELDING, AND/OR ROTATED OPTICS ARE INSTALLED AS INDICATED ON THE PLAN IN ORDER TO ACHIEVE THE LIGHTING LEVELS DEPICTED ON THIS PLAN. EXISTING POLES AND FOUNDATIONS ARE NOT TO BE REUSED.
- UPON OWNER'S ACCEPTANCE OF THE COMPLETED PROJECT, THE OWNER SHALL BE RESPONSIBLE FOR ALL MAINTENANCE, SERVICING, REPAIR AND INSPECTION OF THE LIGHTING SYSTEM AND ALL OF ITS COMPONENTS AND RELATED SYSTEMS. THE LUMINAIRES, LAMPS AND LENSES MUST BE REGULARLY INSPECTED/MAINTAINED TO ENSURE THAT THEY FUNCTION PROPERLY. THIS WORK SHOULD INCLUDE, BUT IS NOT LIMITED TO, VISUAL OBSERVATION, CLEANING OF LENSES, AND OTHER MAINTENANCE SPECIFIED BY THE MANUFACTURER. FAILURE TO FOLLOW THE ABOVE STEPS COULD RESULT IN IMPROPER LIGHT DISTRIBUTION AND FAILURE TO COMPLY WITH THE APPROVED DESIGN.
- THE LIGHT LOSS FACTORS (LLF) DEPICTED IN THE LUMINAIRE SCHEDULE ON THIS PLAN ARE BASED ON DATA PROVIDED BY THE MANUFACTURER FOLLOWING IES LM-80-21 TESTING (OR MOST RECENT EDITION). THE LIGHT LEVELS DEPICTED ON THIS PLAN WERE CALCULATED BASED ON THE LLF LISTED IN THE LUMINAIRE SCHEDULE.
- PRIOR TO CONSTRUCTION, THE CONTRACTOR SHALL PROVIDE SUBMITTALS TO BOHLER FOR REVIEW AND APPROVAL. SUBSTITUTION REQUESTS MUST BE ACCOMPANIED BY A HORIZONTAL PHOTOMETRIC STUDY DEMONSTRATING THAT THE LUMINAIRES IN QUESTION WILL MEET THE DESIGN INTENT OF THIS PLAN. SUBSTITUTION REQUESTS WITHOUT A PHOTOMETRIC STUDY WILL BE REJECTED.
- LIGHT POLE FOUNDATIONS ARE SHOWN ON THE PLAN IN THE INTENDED LOCATION BASED ON THE LIGHTING CALCULATIONS. UNLESS OTHERWISE NOTED, LIGHT SYMBOLS ARE SHOWN LARGER THAN ACTUAL SIZE, HOWEVER FOUNDATION SIZE IS SHOWN AT ACTUAL SIZE.

**REFER TO DETAIL SHEET FOR  
LIGHT POLE FOUNDATION DETAIL**

**THIS PLAN TO BE UTILIZED FOR  
LIGHTING PURPOSES ONLY**



**BOHLER**  
SITE CIVIL AND CONSULTING ENGINEERING  
PROGRAM MANAGEMENT  
LANDSCAPE ARCHITECTURE  
SUSTAINABLE DESIGN  
PERMITTING SERVICES  
TRANSPORTATION SERVICES

**REVISIONS**

REV	DATE	COMMENT	DRAWN BY	CHECKED BY

**811**  
Know what's below.  
Call before you dig.  
NEW JERSEY  
YOU MUST CALL 811 BEFORE ANY EXCAVATION  
WHETHER IT'S ON PRIVATE OR PUBLIC LAND.  
1-800-272-1000  
www.811-nj.org

**ISSUED FOR MUNICIPAL &  
AGENCY REVIEW & APPROVAL**

THIS DRAWING IS INTENDED FOR MUNICIPAL AND/OR AGENCY REVIEW AND APPROVAL. IT IS NOT INTENDED AS A CONSTRUCTION DOCUMENT UNLESS INDICATED OTHERWISE.

PROJECT No.:	NJ240059-00-0E
DRAWN BY:	CTC
CHECKED BY:	BE
DATE:	10/28/2025
CAD ID:	P-CVL-LGHT

**SITE DEVELOPMENT  
PLANS**  
FOR  
**SIGNATURE AVIATION  
USA, LLC**  
SIGNATURE  
AVIATION  
PROPOSED EAST SIDE RAMP  
EXPANSION & HANGAR  
TETERBORO AIRPORT  
FRED WEHRAN DRIVE  
BOROUGH OF TETERBORO  
BERGEN COUNTY, NEW JERSEY

**BOHLER**  
BOHLER ENGINEERING NJ, LLC  
125 HALF MILE ROAD, SUITE 207  
RED BANK, NJ 07701  
Phone: (732) 825-6800  
www.BohlerEngineering.com  
NJ CERT. OF AUTHORIZATION NO. 246A28161700 & M6000122

**J.A. HOLLZAPFEL**  
PROFESSIONAL ENGINEER  
NEW JERSEY LICENSE NO. 3500  
PHYSICAL ADDRESS: 125 HALF MILE ROAD, SUITE 207, RED BANK, NJ 07701

SHEET TITLE:  
**LIGHTING  
PLAN**  
SHEET NUMBER:  
**17**  
OF 17  
ORG. DATE - 10/28/2025

I:\BOHLER\NET\SHARES\PROJECTS\2025\240059-00\CAD\DRAWINGS\PLAN SET\CIVIL SITE PLAN\SP-CVL-LGHT-NJ240059-00-0E-11-LAYOUT-1-1011.LGHT





